

SCHEDA TECNICA

BL 45 Z22 I13D INDUSTRIAL VACUUM

ASPIRATORI INDUSTRIALI ATEX ED ACD

The **BL 45 Z22 industrial vacuum cleaner** is a **compact, ATEX-certified** vacuum cleaner from the **Depureco range**. **Suction** takes place thanks to a **high-performance Brushless motor** that guarantees silence and power. The **BL 45 Z22 industrial vacuum cleaner** has a large surface filter (35,000 cm²) certified in **class M**, with a **filtration efficiency** of up to 1 micron. On request, it is possible to install an **absolute filter H14** to vacuum even the **finest dust**. The **filter chamber** is in standard **AISI 304** stainless steel. The filter is cleaned using a handy, very robust, and **effective manual shaker**. The material of this **vacuum cleaner** is collected in an **AISI 304** stainless steel **container** with a capacity of 45Lt.

**POTENZA**
1,1 kW**SUPERFICIE**
15.000 cm²**CAPACITÀ**
45 Lt

HIGHLIGHTS



SUCTION UNIT

The suction unit is a powerful brushless motor, which is suitable to work in continuous mode. There are two filters on the motor head: one to protect the motor and the other positioned on the air outlet. The exhaust air is totally carbon free.



FILTERING ELEMENT

The main filter is made of sturdy antistatic polyester. Inside the fabric, there is a conductive net which avoids any electrostatic charge. The star shape ensures a large filter surface in a compact space and the passage of the air also when the filter is dirty. The fabric of the filter is M class (BIA | EN 60335-2-69) certified. It means that all particles until 1 micron are stopped by the filter, so as to protect the motor and the operator around the vacuum cleaner.



FILTER SHAKER

On one side of the filter chamber there is an ergonomic manual shaker through which the operator can easily and quickly clean the filter, removing any dust and debris from its surface. Thanks to this smart cleaning system the operator can carry on working without needing to change or wash the filter.



COLLECTION BIN

The vacuumed material is collected in an AISI 304 stainless steel container, equipped with a metal handle that enables the bin to be detached from the machine, to avoid any spark that could be generated by the electrostatic charge. Thanks to the 4 sturdy pivoting wheels, the bin can be moved very easily to then dispose of the collected material.

DATI TECNICI

MOTORE

Tipologia	brushless
Marcatura ATEX	II 3 D Ex htc IIB T140°C Dc
Voltaggio	110/230V
Massimo vuoto	230mBar
Massima portata d'aria	220m3/h
Livello di rumorosità	72dB(A)
Frequenza	50/60Hz
Potenza	1,5HP

FILTRO PRIMARIO

Tipologia	star filter
Classe EN 60335-2-69	M Class
Media	antistatic polyester
Pulizia filtro	filter shaker

MACCHINA

Bocca aspirante	70Ø mm
Dimensioni	550 x 620mm
Altezza	1.303mm
Peso	45Kg

OPZIONI



MEDIA FILTRANTE DISPONIBILE



PTFE ANT

Filtro PTFE antistatico (Classe M EN 60335-2-69)

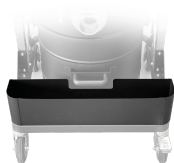


HEPA 14

Filtro assoluto (EN 1822)
22.000 cm² superficie filtrante
Classe H14 (EN 1822)
Fibra di vetro

OPZIONI

ALTRE OPZIONI



AB

Cassetta porta accessori



GX

Camera e contenitore acciaio INOX AISI 304

ACCESSORI



P13641

STARTER KIT ANTISTATICO Ø 40MM

Kit base di accessori antistatici per applicazione con aspiratore ATEX in diametro 40 mm



P13641

STARTER KIT ANTISTATICO Ø 40MM

Kit base di accessori antistatici per applicazione con aspiratore ATEX in diametro 40 mm



P13641

STARTER KIT ANTISTATICO Ø 40MM

Kit base di accessori antistatici per applicazione con aspiratore ATEX in diametro 40 mm