

## SCHEDA TECNICA

# BL 45 JC Z22 I13D BRUSHLESS VACUUM

---

**ASPIRATORI INDUSTRIALI ATEX ED ACD**

---

The **BL 45 JC Z22 Brushless industrial vacuum cleaner** is an **ATEX Z22** certified industrial vacuum cleaner. **Suction** takes place thanks to a **high-performance Brushless motor** that guarantees silence and power. The **BL 45 JC Z22 Brushless industrial vacuum cleaner** has a large surface filter (35,000 cm<sup>2</sup>) certified in **class M**, with a **filtration efficiency** of up to 1 micron. On request, it is possible to install an **absolute filter H14** to suck up even the **finest dust**. On this **vacuum cleaner**, there is a **semi-automatic JetClean® filter cleaning system** that allows you to **clean the filter** without having to stop the suction. The material is collected in an **AISI 304 stainless steel container**, on wheels, with a capacity of 45 Lt.

**POTENZA**  
1,1 kW**SUPERFICIE**  
35.000 cm<sup>2</sup>**CAPACITÀ**  
45 Lt

## HIGHLIGHTS



### SUCTION UNIT

The suction unit is a powerful brushless motor, which is suitable to work in continuous mode. There are two filters on the motor head: one to protect the motor and the other positioned on the air outlet. The exhaust air is totally carbon free.



### ANTISTATIC M CLASS CARTRIDGE

The filtration is guaranteed by a sturdy polyester filtering cartridge. The cartridge is made to ensure large filter surface (40.000 cm<sup>2</sup>) in a compact space. This way air can pass through when the filter is dirty too. The filter is M Class (BIA | EN 60335-2-69) certified. It stops the particles until 1 micron, preserving the motors and the operator.



### JETCLEAN® FILTER CLEANING SYSTEM

The vacuum cleaner is equipped with a new filter cleaning system named JetClean® designed by Depureco. Using the difference in pressure outside and inside the vacuum cleaner, the system generates an air jet which by traveling through the cartridge detaches the dust from the filter's surface. It is a fast and efficient way to keep the filter clean during operations, without stopping the vacuuming operations.



### COLLECTION BIN

The vacuumed material is collected in an AISI 304 stainless steel container, equipped with a metal handle that enables the bin to be detached from the machine, to avoid any spark that could be generated by the electrostatic charge. Thanks to the 4 sturdy pivoting wheels, the bin can be moved very easily, and then dispose of the collected material.

## DATI TECNICI

### MOTORE

Tipologia	brushless
Marcatura ATEX	II 3 D Ex htc IIB T140°C Dc
Voltaggio	110/230V
Massimo vuoto	230mBar
Massima portata d'aria	220m3/h
Livello di rumorosità	72dB(A)
Frequenza	50/60Hz
Potenza	1,5HP

### FILTRO PRIMARIO

Tipologia	cartridge
Diametro	305mm
Classe EN 60335-2-69	M Class
Media	antistatic polyester
Pulizia filtro	Jet Clean

### MACCHINA

Bocca aspirante	50Ø mm
Dimensioni	516 x 545mm
Altezza	1.303mm
Peso	45Kg

**OPZIONI**



**MEDIA FILTRANTE DISPONIBILE**

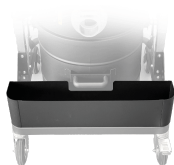


**HEPA 14**

Filtro assoluto (EN 1822)  
22.000 cm<sup>2</sup> superficie filtrante  
Classe H14 (EN 1822)  
Fibra di vetro

**OPZIONI**

**ALTRE OPZIONI**



**AB**

Cassetta porta accessori



**BX**

Contenitore in acciaio INOX AISI 304

**ACCESSORI**



**P13641**

**STARTER KIT ANTISTATICO Ø 40MM**

Kit base di accessori antistatici per applicazione con aspiratore ATEX in diametro 40 mm



**P13641**

**STARTER KIT ANTISTATICO Ø 40MM**

Kit base di accessori antistatici per applicazione con aspiratore ATEX in diametro 40 mm



**P13641**

**STARTER KIT ANTISTATICO Ø 40MM**

Kit base di accessori antistatici per applicazione con aspiratore ATEX in diametro 40 mm