

SCHEDA TECNICA

TB 18 M Z2-Z22

INDUSTRIAL VACUUM

ASPIRATORI INDUSTRIALI ATEX ED ACD

The **TB 18 M Z2-Z22** model is an **industrial vacuum cleaner** equipped with an **ATEX-certified side channel turbine**, ideal for **continuous work** without the need for maintenance. Inside this **vacuum cleaner**, there is a large surface antistatic filter (15,000 cm²), **M class** certified, with a **filtration efficiency** of up to 1 micron. The unit can be equipped with an **absolute filter H14** on request, to vacuum even the **finest dust**. The filter is **cleaned** using a handy, very robust, and **effective manual shaker**. Chamber and container are completely made of **standard AISI 304 stainless steel**. A large **45 Lt release container** on wheels allows for **easy emptying of the vacuumed material**.

**POTENZA**
1,8 kW**SUPERFICIE**
15.000 cm²**CAPACITÀ**
45 Lt

HIGHLIGHTS

SUCTION UNIT

The suction unit is an ATEX certified side channel blower with direct coupling between motor and impeller. Furthermore, to guarantee safe work, the unit is equipped with a safety valve which, in the event of obstruction in the vacuuming elements, prevents overheating.


FILTERING ELEMENT

The main filter is made of sturdy antistatic polyester. Inside the fabric, there is a conductive net which avoids any electrostatic charge. The star shape ensures a large filter surface in a compact space and the passage of the air also when the filter is dirty. The fabric of the filter is M class (BIA | EN 60335-2 -69) certified. It means that all particles until 1 micron are stopped by the filter, so as to protect the motor and the operator around the vacuum cleaner.


FILTER SHAKER

On one side of the filter chamber there is an ergonomic manual shaker through which the operator can easily and quickly clean the filter, removing any dust and debris from its surface. Thanks to this smart cleaning system the operator can carry on working without needing to change or wash the filter.


COLLECTION BIN

The vacuumed material is collected in an AISI 304 stainless steel container, equipped with a metal handle that enables the bin to be detached from the machine, to avoid any spark that could be generated by the electrostatic charge. Thanks to the 4 sturdy pivoting wheels, the bin can be moved very easily to then dispose of the collected material.

DATI TECNICI
MOTORE

Tipologia	side channel blower
Marcatura ATEX	II 3 G/D Ex htc IIIB T140°C Gc/Dc
Voltaggio	230V
IP	55
Vuoto in continuo	180mBar
Massima portata d'aria	240m3/h
Valvola di sicurezza	included
Livello di rumorosità	72dB(A)
Frequenza	50/60Hz
Potenza	2,4HP
Classe di isolamento	F

FILTRO PRIMARIO

Tipologia	star filter
Classe EN 60335-2-69	M Class
Media	antistatic polyester
Pulizia filtro	manual shaker

MACCHINA

Bocca aspirante	70Ø mm
Dimensioni	550 x 620mm
Altezza	1.400mm
Peso	48Kg

OPZIONI



MEDIA FILTRANTE DISPONIBILE



PTFE ANT

Filtro PTFE antistatico (Classe M EN 60335-2-69)

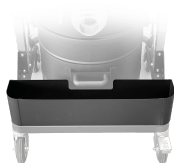


HEPA 14

Filtro assoluto (EN 1822)
22.000 cm² superficie filtrante
Classe H14 (EN 1822)
Fibra di vetro

OPZIONI

ALTRE OPZIONI



AB

Cassetta porta accessori



LP

Sistema di raccolta a rotolo continuo Endless Bag
Sistema insaccamento Longopac

ACCESSORI



P12378

STARTER KIT ANTISTATICO Ø 50MM

Kit base di accessori antistatici per applicazione con aspiratore ATEX in diametro 50 mm



P12378

STARTER KIT ANTISTATICO Ø 50MM

Kit base di accessori antistatici per applicazione con aspiratore ATEX in diametro 50 mm



P12378

STARTER KIT ANTISTATICO Ø 50MM

Kit base di accessori antistatici per applicazione con aspiratore ATEX in diametro 50 mm