

SCHEDA TECNICA

# AC 65 INDUSTRIAL VACUUM

## ASPIRATORI INDUSTRIALI AD ARIA COMPRESSA

The **AC 65** is the most **powerful AIR industrial vacuum** in the **Depureco** range. Thanks to the **high-performance Venturi pipe**, an impressive vacuum of **500 mBar** can be obtained. The **AC 65 industrial vacuum** works in all conditions: **dust, solids, shavings, liquids, and difficult materials** using pipes that can be several meters long. This **vacuum cleaner** is fitted as standard with a **24,000 cm<sup>2</sup> polyester pocket filter** certified as **M Class by BIA** (Berufsgenossenschaftliches Institut für Arbeitssicherheit) with a **1µ filtration efficiency**. The filter can be customized to a specific application. In this **vacuum model anti-static filters** are available to prevent electrostatic charges, in **NOMEX** to withstand high temperatures (up to **250°C**), **Teflon** coated to work with wet materials and with **PTFE nanotechnology** treatment to work with the most **difficult dust**. The **AC 65 vacuum** is equipped with a **manual filter cleaning system**. The filter can be **shaken easily** and effectively with the lever on the side of the vacuum. A handy detachable **container on wheels** allows the operator to collect the **vacuumed material** and conveniently dispose of it. The container can have a capacity of either **65 lt** or **100 lt**; in both cases, it has reinforced outer support for the **4 castor wheels** so that it can be **handled safely** even when it contains several kg of material. Tilttable kit for containers available on demand.



**SUPERFICIE**  
24.000 cm<sup>2</sup>



**CAPACITÀ**  
65 Lt

## HIGHLIGHTS



### SUCTION UNIT

The vacuum cleaner is equipped with a Venturi pipe. This generates a remarkable vacuum without any mechanical or electrical components.



### FILTERING ELEMENT

The filtration is guaranteed by an M class polyester filter. The star shape enables air to flow through the filter even when it is dirty. The fabric of the filter is classified as M Class (BIA | EN 60335-2-69). This means that all particles till 1 micron are stopped by the filter so as to protect the suction unit and the operator around the vacuum cleaner.



### SUCTION INLET

The tangential inlet is designed to ease the process of pushing the material down the bin. A sturdy metal cyclone welded inside the chamber slows the material's entry speed considerably down so that it falls directly inside the bin. This way, the filter is efficiently protected, minimising clogging risk



### COLLECTION BIN

The material is collected inside a painted container equipped with a metal handle which enables the bin to be detached from the machine. Thanks to its 4 swiveling wheels, the bin can be easily moved and emptied. Each wheel is reinforced to guarantee maximum stability during handling.

## DATI TECNICI

### MOTORE

Tipologia	Venturi pipe
Massimo vuoto	500mBar
Massima portata d'aria	480m <sup>3</sup> /h
Livello di rumorosità	70dB(A)
Pressione richiesta	6-8
Aria richiesta	1.233

### FILTRO PRIMARIO

Tipologia	star filter
Classe EN 60335-2-69	M Class
Media	polyester
Pulizia filtro	manual shaker

### MACCHINA

Bocca aspirante	80Ø mm
Dimensioni	660 x 800mm
Altezza	1.200mm
Peso	62Kg

**OPZIONI**

**MEDIA FILTRANTE DISPONIBILE**



**ANT M**  
Filtro antistatico (Classe M EN 60335-2-69)



**BFL**  
Filtro classe M 38.000 cm<sup>2</sup>



**MTF**  
Filtro teflonato (Classe M EN 60335-2-69)



**NOMEX**  
Filtro resistente 250° Celsius



**PTFE**  
Filtro PTFE (Classe M EN 60335-2-69)



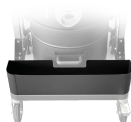
**PTFE ANT**  
Filtro PTFE antistatico (Classe M EN 60335-2-69)



**HEPA 14**  
Filtro assoluto (EN 1822)  
28.000 cm<sup>2</sup> superficie filtrante  
Classe H14 (EN 1822)  
Fibra di vetro

**OPZIONI**

**ALTRE OPZIONI**



**AB**  
Cassetta porta accessori



**BX**  
Contenitore in acciaio INOX AISI 304



**BX**  
Camera e contenitore acciaio INOX AISI 304



**GRD**  
Messa a terra



**LP**  
Sistema di raccolta a rotolo continuo Endless Bag  
Sistema insaccamento Longopac

**ACCESSORI**



**PO0278**  
**TERMINALE IN ACCIAIO Ø 80/50MM**  
Riduzione per innesto rapido aspiratore in acciaio zincato diametro 80/50 mm



**PO0278**  
**TERMINALE IN ACCIAIO Ø 80/50MM**  
Riduzione per innesto rapido aspiratore in acciaio zincato diametro 80/50 mm



**PO0278**  
**TERMINALE IN ACCIAIO Ø 80/50MM**  
Riduzione per innesto rapido aspiratore in acciaio zincato diametro 80/50 mm



**PO0278**  
**TERMINALE IN ACCIAIO Ø 80/50MM**  
Riduzione per innesto rapido aspiratore in acciaio zincato diametro 80/50 mm