

SCHEDA TECNICA

M65/100 INDUSTRIAL VACUUM

ASPIRATORI INDUSTRIALI WET&DRY MONOFASE

The **M65/100** is the most **powerful single-phase industrial vacuum** in the **Depureco** range. Thanks to the **3 By-Pass motors** it can reach an impressive power output of **3.9 kW**. The **M65/100 industrial vacuum** works in all conditions: **dust, shavings, liquids, and difficult materials** using pipes that can be several meters long. This **vacuum cleaner** is fitted with a 24,000 cm² polyester pocket filter certified as **M Class by BIA** (Berufsgenossenschaftliches Institut für Arbeitssicherheit) with a **1µ filtration efficiency**. The filter can be customized to a specific application. **Anti-static filters** are available to prevent electrostatic charges, in **NOMEX** to withstand high temperatures (up to 250°C), **Teflon** coated to work with wet materials, and with **PTFE nanotechnology** treatment to work with the most **difficult dust**. The industrial vacuum is equipped with a **manual filter cleaning system**. The filter can be shaken easily and effectively with the lever on the side of the vacuum. The **M65/100 vacuum cleaner** is equipped with a handy detachable **container** on wheels allowing the operator to collect the vacuumed material and conveniently dispose of it. The container can have a capacity of either 65 Lt or 100 Lt; in both cases, it has reinforced outer support for the 4 castor wheels so that it can be **handled safely** even when it contains several kg of material. Tilttable kit for containers available on demand. If the direct bagging system is preferred, the **M100 Longopac** version is available.



POTENZA
3,9 kW



SUPERFICIE
24.000 cm²



CAPACITÀ
65/100 Lt

HIGHLIGHTS
SUCTION UNIT


The vacuum is generated by 3 by-pass motors. Each motor is managed by an independent switch, permitting the operator to control the intake performance. The motors are located in a sturdy casing, with an insulating sponge to maintain a low noise level.

COLLECTION BIN


The material is collected inside a painted container equipped with a metal handle which enables the bin to be detached from the machine. Thanks to its 4 swiveling wheels, the bin can be easily moved and emptied. Each wheel is reinforced to guarantee maximum stability during handling.


FILTERING ELEMENT

The filtration is guaranteed by an M class polyester filter. The star shape enables air to flow through the filter even when it is dirty. The fabric of the filter is classified as M Class (BIA | EN 60335-2-69). This means that all particles till 1 micron are stopped by the filter so as to protect the motors and the operator around the vacuum cleaner.


MANUAL FILTER SHAKER

On one side of the filter chamber there is an ergonomic manual shaker through which the operator can easily and quickly clean the filter, removing any dust and debris from its surface. Thanks to this smart cleaning system the operator can carry on working without needing to change or wash the filter.

DATI TECNICI
MOTORE

Tipologia	by-pass
Voltaggio	230V
Massimo vuoto	250mBar
Massima portata d'aria	570m3/h
Livello di rumorosità	72dB(A)
Motori	3
Frequenza	50/60Hz
Potenza	5,2HP

FILTRO PRIMARIO

Tipologia	star filter
Classe EN 60335-2-69	M Class
Media	polyester
Pulizia filtro	manual shaker

MACCHINA

Bocca aspirante	70Ø mm
Dimensioni	660 x 800mm
Altezza	1.3001.515mm
Peso	80Kg

OPZIONI

MEDIA FILTRANTE DISPONIBILE



ANT M
Filtro antistatico (Classe M EN 60335-2-69)



BFL
Filtro classe M 38.000 cm²



MTF
Filtro teflonato (Classe M EN 60335-2-69)



NOMEX
Filtro resistente 250° Celsius



PTFE
Filtro PTFE (Classe M EN 60335-2-69)



PTFE ANT
Filtro PTFE antistatico (Classe M EN 60335-2-69)



HEPA 14
Filtro assoluto (EN 1822)
28.000 cm² superficie filtrante
Classe H14 (EN 1822)
Fibra di vetro

OPZIONI

SISTEMI DI PULIZIA FILTRO DISPONIBILI



COM
Compressore a bordo
Compressore montato su carenatura posteriore



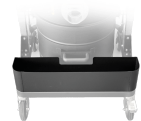
SP
Pulizia cartucce in controcorrente d'aria
Filtro antistatico classe M (EN 60335-2-69)
3 Cartucce poliestere antistatico
9 m² superficie filtrante

OPZIONI

ALTRE OPZIONI



100 LT
Contentore 100 lt.



AB
Cassetta porta accessori



BX
Contentore in acciaio INOX AISI 304



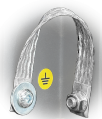
GX
Camera e contenitore acciaio INOX AISI 304



TX
Contentore camera e struttura in acciaio INOX AISI 304



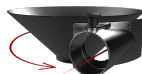
FLT
Dispositivo galleggiante per liquidi



GRD
Messa a terra



KDP
KIT differenziale di pressione per insaccamento



EFFETTO CICLONICO
Bocca aspirante tangenziale + ciclone



RC SCHUKO
Controllo remoto da elettroutensile (MAX 2000 W)

ACCESSORI



P00327
SPAZZOLA FISSA WET & DRY Ø 50MM
Accessorio fisso wet & dry con connessione a tubo flessibile D50 mm



P00327
SPAZZOLA FISSA WET & DRY Ø 50MM
Accessorio fisso wet & dry con connessione a tubo flessibile D50 mm



P00327
SPAZZOLA FISSA WET & DRY Ø 50MM
Accessorio fisso wet & dry con connessione a tubo flessibile D50 mm



P00327
SPAZZOLA FISSA WET & DRY Ø 50MM
Accessorio fisso wet & dry con connessione a tubo flessibile D50 mm