

## SCHEDA TECNICA

# MINI AIR 2 V

## INDUSTRIAL VACUUM

### ASPIRATORI INDUSTRIALI AD ARIA COMPRESSA

The **Mini air** is a **powerful** and **versatile industrial vacuum**, useful for different **industrial applications** where it is necessary to use compressed air. This **vacuum cleaner** is equipped with **2 ejectors** that work in parallel and ensure maximum **performance**. Each ejector can be adjusted to provide more airflow or more vacuum, depending on the application. The **Depureco's Mini air vacuum** is equipped with a filter in **M Class** sturdy polyester ( $1\mu$  filtration efficiency) to stop even **fine dust**. A different filter can be installed depending on the application. On these **vacuums models**, **Teflon** water-repellent filters, **Nomex** 250°C resistant filters, filters with **PTFE** treatment for more binding, and **difficult dust** are also available. The **Mini air industrial vacuum** is equipped with a large 45 L detachable **container** that allows the operator to empty the **vacuumed material** easily. Disposable collection bags can also be used. A floating system can be provided in the container to **vacuum liquids** in complete **safety**.



**SUPERFICIE**  
15.000 cm<sup>2</sup>



**CAPACITÀ**  
45 Lt

**HIGHLIGHTS**

**SUCTION UNIT**

The vacuum cleaner is equipped with two ejectors which generate, without the use of mechanical elements, an impressive depression inside the chamber, thus enabling the vacuuming operations.


**FILTERING ELEMENT**

The filtration is guaranteed by an M class polyester filter. The star shape enables air to flow through the filter even when it is dirty. The fabric of the filter is classified as M Class (BIA | EN 60335-2-69). This means that all particles till 1 micron are stopped by the filter so as to protect the suction unit and the operator around the vacuum cleaner.


**MANUAL FILTER SHAKER**

On one side of the filter chamber there is an ergonomic manual shaker through which the operator can easily and quickly clean the filter, removing any dust and debris from its surface. Thanks to this smart cleaning system the operator can carry on working without needing to change or wash the filter.


**COLLECTION BIN**

The material is collected inside a painted container equipped with a metal handle which enables the bin to be detached from the machine. Thanks to its 4 swiveling wheels, the bin can be easily moved and emptied.

**DATI TECNICI**
**MOTORE**

|                        |              |
|------------------------|--------------|
| Tipologia              | Venturi pipe |
| Massimo vuoto          | 500mBar      |
| Massima portata d'aria | 250m3/h      |
| Livello di rumorosità  | 78dB(A)      |
| Pressione richiesta    | 6 - 8        |
| Eiettori               | 2            |
| Aria richiesta         | 2.500        |

**FILTRO PRIMARIO**

|                      |               |
|----------------------|---------------|
| Tipologia            | star filter   |
| Classe EN 60335-2-69 | M Class       |
| Media                | polyester     |
| Pulizia filtro       | manual shaker |

**MACCHINA**

|                 |             |
|-----------------|-------------|
| Bocca aspirante | 70Ø mm      |
| Dimensioni      | 550 x 620mm |
| Altezza         | 1.150mm     |
| Peso            | 40Kg        |

**OPZIONI**

**MEDIA FILTRANTE DISPONIBILE**



**ANT M**  
Filtro antistatico (Classe M EN 60335-2-69)



**MTF**  
Filtro teflonato (Classe M EN 60335-2-69)



**NOMEX**  
Filtro resistente 250° Celsius



**PTFE**  
Filtro PTFE (Classe M EN 60335-2-69)



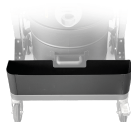
**PTFE ANT**  
Filtro PTFE antistatico (Classe M EN 60335-2-69)



**HEPA 14**  
Filtro assoluto (EN 1822)  
22.000 cm<sup>2</sup> superficie filtrante  
Classe H14 (EN 1822)  
Fibra di vetro

**OPZIONI**

**ALTRE OPZIONI**



**AB**  
Cassetta porta accessori



**BX**  
Contenitore in acciaio INOX AISI 304



**GX**  
Camera e contenitore acciaio INOX AISI 304



**FLT**  
Dispositivo galleggiante per liquidi



**GRD**  
Messa a terra

**ACCESSORI**



**P13638**  
**STARTER KIT Ø 40MM**  
Kit base di accessori specifici per aspirazione solidi e liquidi in diametro 40 mm



**P13638**  
**STARTER KIT Ø 40MM**  
Kit base di accessori specifici per aspirazione solidi e liquidi in diametro 40 mm



**P13638**  
**STARTER KIT Ø 40MM**  
Kit base di accessori specifici per aspirazione solidi e liquidi in diametro 40 mm