

SCHEDA TECNICA

TB 18 M INDUSTRIAL VACUUM

ASPIRATORI INDUSTRIALI TRIFASE

The **TB 18 M model** is an **industrial vacuum** fitted with a **230V side channel turbine** (Made in Italy), ideal for working continuously without the need for maintenance. The **filter chamber** contains a large surface polyester filter, certified as **M Class** (1-micron filtration efficiency), ideal for working with even the **finest dust**. In this **industrial vacuum** of the **Depureco three-phase range**, a different filter can be installed depending on the professional application. **Teflon** water-repellent filters, **Nomex 250°C** resistant filters, filters with **PTFE** treatment for more binding and **difficult dust** are also available. The unit can be fitted with an **H14 absolute filter** on demand. The **TB industrial vacuum** is equipped with a large 45 lt detachable **container** that allows the operator to empty the **vacuumed material** easily. Disposable collection bags can also be used. A floating system can be provided in the container to **vacuum liquids** in complete **safety**.



POTENZA
1,8 kW



SUPERFICIE
15.000 cm²



CAPACITÀ
45 Lt

HIGHLIGHTS

SUCTION UNIT

The suction unit is a side channel blower with direct coupling between motor and impeller. The side channel blower is equipped with a safety valve to guarantee a totally safe continuous work, without any maintenance.


M CLASS FILTER

The filtration is guaranteed by a M class polyester filter. The star shape permits the passage of the air also when the filter is dirty. The textile of the filter is in M Class (BIA | En 60335-2-69). It means that all particles till 1 micron are stopped by the filter so as to protect the motors and the operator near the vacuum cleaner.


FILTER SHAKER

On one side of the filtration chamber there is an ergonomic manual shaker that permits to clean the filter easily and quickly, removing the dust and debris from the filter surface. Thanks to this smart cleaning system the operator can carry on working without changing or washing the filter.


COLLECTION BIN

The collected material is stocked inside a sturdy steel container. Behind the vacuum cleaner there is a metal handle that permits to drop down the bin. The bin can be easily moved because it is equipped by 4 pivoting industrial wheels. Each wheel is located on a reinforced support to guarantee the best stability during the movement, also when the container is full.

DATI TECNICI
MOTORE

Tipologia	side channel blower
Voltaggio	230V
IP	55
Vuoto in continuo	230mBar
Massima portata d'aria	240m ³ /h
Valvola di sicurezza	included
Livello di rumorosità	74dB(A)
Frequenza	50/60Hz
Potenza	2,4HP

FILTRO PRIMARIO

Tipologia	star filter
Classe EN 60335-2-69	M Class
Media	poliestere
Pulizia filtro	manual shaker

MACCHINA

Bocca aspirante	70Ø mm
Dimensioni	550 x 620mm
Altezza	1.353mm
Peso	50Kg

OPZIONI

MEDIA FILTRANTE DISPONIBILE



ANT M
Filtro antistatico (Classe M EN 60335-2-69)



MTF
Filtro teflonato (Classe M EN 60335-2-69)



NOMEX
Filtro resistente 250° Celsius



PTFE
Filtro PTFE (Classe M EN 60335-2-69)



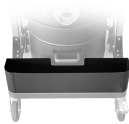
PTFE ANT
Filtro PTFE antistatico (Classe M EN 60335-2-69)



HEPA 14
Filtro assoluto (EN 1822)
22.000 cm² superficie filtrante
Classe H14 (EN 1822)
Fibra di vetro

OPZIONI

ALTRE OPZIONI



AB
Cassetta porta accessori



BX
Contenitore in acciaio INOX AISI 304



GX
Camera e contenitore acciaio INOX AISI 304



FLT
Dispositivo galleggiante per liquidi



GRD
Messa a terra



KDP
KIT differenziale di pressione per insaccamento

ACCESSORI



P13638
STARTER KIT Ø 40MM
Kit base di accessori specifici per aspirazione solidi e liquidi in diametro 40 mm



P13638
STARTER KIT Ø 40MM
Kit base di accessori specifici per aspirazione solidi e liquidi in diametro 40 mm



P13638
STARTER KIT Ø 40MM
Kit base di accessori specifici per aspirazione solidi e liquidi in diametro 40 mm