

SCHEDA TECNICA

# ECOBULL M INDUSTRIAL VACUUM

## ASPIRATORI INDUSTRIALI TRIFASE

The **Ecobull M industrial vacuum** is the **most powerful** in its **category**, fitted with a **3 kW side channel turbine**, ideal for working continuously without the need for maintenance. The **filter chamber** contains a large surface (24,000 cm<sup>2</sup>) polyester filter, certified as **M Class** (1-micron filtration efficiency), ideal for working with even the **finest dust**. In the **industrial vacuum** of the **Depureco three-phase range**, a different filter can be installed depending on the professional application. **Teflon** water-repellent filters, **Nomex** 250°C resistant filters, and filters with **PTFE** treatment for more binding and **difficult dust** are also available. The unit can be fitted with an **H14 absolute filter** on demand. The **Ecobull industrial vacuum** is equipped with a large 65 or 100 Lt detachable **container** on wheels that allows the operator to empty the **vacuumed material** easily. Disposable collection bags can also be used. A floating system can be provided in the container to **vacuum liquids** in complete **safety**.


**POTENZA**  
 1,8 kW

**SUPERFICIE**  
 15.000 cm<sup>2</sup>

**CAPACITÀ**  
 45 Lt

**HIGHLIGHTS**

**SUCTION UNIT**

The suction unit is a side channel blower with direct coupling between motor and impeller. The side channel blower is equipped with a safety valve to guarantee continued work in complete safety, without any maintenance. The blower is also equipped with a metal silencer to maintain a low noise level.


**FILTERING UNIT**

The filtration is guaranteed by an M class polyester filter. The star shape enables air to flow through the filter even when it is dirty. The fabric of the filter is classified as M Class (BIA | EN 60335-2-69). This means that all particles till 1 micron are stopped by the filter so as to protect the blower and the operator around the vacuum cleaner.


**FILTER SHAKER**

On one side of the filter chamber there is an ergonomic manual shaker through which the operator can easily and quickly clean the filter, removing any dust and debris from its surface. Thanks to this smart cleaning system the operator can carry on working without needing to change or wash the filter.


**COLLECTION BIN**

The collected material is stocked inside a sturdy steel container. Behind the vacuum cleaner there is a metal handle that permits to drop down the bin. The bin can be easily moved away because it is equipped by 4 pivoting industrial wheels. Each wheel is located on a reinforced support to guarantee the best stability during the movement, also when the container is full.

**DATI TECNICI**
**MOTORE**

Tipologia	side channel blower
Voltaggio	230V
IP	55
Vuoto in continuo	230mBar
Massima portata d'aria	240m <sup>3</sup> /h
Valvola di sicurezza	included
Livello di rumorosità	74dB(A)
Frequenza	50/60Hz
Potenza	2,4HP
Classe di isolamento	F

**FILTRO PRIMARIO**

Tipologia	star filter
Classe EN 60335-2-69	M Class
Media	polyester
Pulizia filtro	manual shaker

**MACCHINA**

Bocca aspirante	70Ø mm
Dimensioni	660 x 800mm
Altezza	1.530mm
Peso	85Kg

**OPZIONI**

**MEDIA FILTRANTE DISPONIBILE**



**ANT M**  
Filtro antistatico (Classe M EN 60335-2-69)



**BFL**  
Filtro classe M 38.000 cm<sup>2</sup>



**MTF**  
Filtro teflonato (Classe M EN 60335-2-69)



**NOMEX**  
Filtro resistente 250° Celsius



**PTFE**  
Filtro PTFE (Classe M EN 60335-2-69)



**PTFE ANT**  
Filtro PTFE antistatico (Classe M EN 60335-2-69)



**HEPA 14**  
Filtro assoluto (EN 1822)  
28.000 cm<sup>2</sup> superficie filtrante  
Classe H14 (EN 1822)  
Fibra di vetro

**OPZIONI**

**SISTEMI DI PULIZIA FILTRO DISPONIBILI**



**COM**  
Compressore a bordo  
Compressore montato su carenatura posteriore



**JC**  
Jet Clean  
Pulizia semiautomatica a contro corrente d'aria, classe M filtro (EN 60335-2-69), 1 filtro cartuccia poliestere, 4 m<sup>2</sup> superficie filtrante, ghigliottina non inclusa



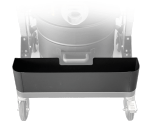
**SP**  
Pulizia cartucce in controcorrente d'aria  
Filtro antistatico classe M (EN 60335-2-69)  
3 Cartucce poliestere antistatico  
9 m<sup>2</sup> superficie filtrante

**OPZIONI**

**ALTRE OPZIONI**



**100 LT**  
Contentore 100 lt.



**AB**  
Cassetta porta accessori



**BX**  
Contentore in acciaio INOX AISI 304



**GX**  
Camera e contenitore acciaio INOX AISI 304



**FLT**  
Dispositivo galleggiante per liquidi



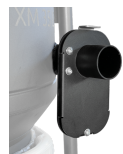
**GRD**  
Messa a terra



**KDP**  
KIT differenziale di pressione per insaccamento



**LP**  
Sistema di raccolta a rotolo continuo Endless Bag  
Sistema insaccamento Longopac



**SD**  
Ghigliottina



**EFFETTO CICLONICO**  
Bocca aspirante tangenziale + ciclone

**ACCESSORI**



**P10866**

**TERMINALE IN ACCIAIO Ø 70/50MM**

Riduzione per innesto rapido aspiratore in acciaio zincato diametro 70/50 mm



**P10866**

**TERMINALE IN ACCIAIO Ø 70/50MM**

Riduzione per innesto rapido aspiratore in acciaio zincato diametro 70/50 mm



**P10866**

**TERMINALE IN ACCIAIO Ø 70/50MM**

Riduzione per innesto rapido aspiratore in acciaio zincato diametro 70/50 mm