

## SCHEDA TECNICA

# MINI AIR Z2-Z22 I13GD INDUSTRIAL VACUUM

## ASPIRATORI INDUSTRIALI ATEX ED ACD

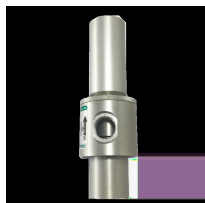
The **MINI AIR Z2-Z22** is a powerful and versatile **ATEX Z22 certified compressed air vacuum cleaner**, useful for various **industrial applications**. It is equipped with **2 ejectors** which, working in parallel, guarantee **maximum performance**. Each ejector is adjustable to provide **more airflow** or **more vacuum** depending on the application. Inside the **vacuum cleaner**, there is a large surface filter in **antistatic polyester** (15,000 cm<sup>2</sup>), **M class certified** with a **filtration efficiency** of 1 micron, to vacuum **electrostatically charged dust** in total safety. An **H14 filter** is available as an option to **pick up the finest dust**. To clean the filter there is a very effective **manual filter cleaning system** as standard. Thanks to a lever outside the filtering chamber, the operator is able to **shake the filter** and **deposit the dust directly in the collection container**. A large **45 Lt release container** on wheels allows you to **easily empty the vacuumed material**.



**SUPERFICIE**  
15.000 cm<sup>2</sup>



**CAPACITÀ**  
45 Lt

**HIGHLIGHTS**

**SUCTION UNIT**

The vacuum cleaner is equipped with two ejectors which generate, without the use of mechanical elements, a remarkable depression inside the chamber, thus making suction possible.


**FILTER SHAKER**

On one side of the filter chamber there is an ergonomic manual shaker through which the operator can easily and quickly clean the filter, removing any dust and debris from its surface. Thanks to this smart cleaning system the operator can carry on working without needing to change or wash the filter.


**FILTERING ELEMENT**

The main filter is made of sturdy antistatic polyester. Inside the fabric, there is a conductive net which avoids any electrostatic charge. The star shape ensures a large filter surface in a compact space and the passage of the air also when the filter is dirty. The fabric of the filter is M class (BIA | EN 60335-2-69) certified. It means that all particles until 1 micron are stopped by the filter, so as to protect the suction unit and the operator around the vacuum cleaner.


**COLLECTION BIN**

The vacuumed material is collected in an AISI 304 stainless steel container, equipped with a metal handle that enables the bin to be detached from the machine, to avoid any spark that could be generated by the electrostatic charge. Thanks to the 4 sturdy pivoting wheels, the bin can be moved very easily to then dispose of the collected material.

**DATI TECNICI**
**MOTORE**

Tipologia	Venturi pipe
Marcatura ATEX	II 3 G/D Ex htc IIIB T100°C Gc/Dc
Massimo vuoto	500mBar
Massima portata d'aria	250m <sup>3</sup> /h
Livello di rumorosità	73dB(A)
Pressione richiesta	6 - 8
Aria richiesta	2.500

**FILTRO PRIMARIO**

Tipologia	star filter
Classe EN 60335-2-69	M Class
Media	antistatic polyester
Pulizia filtro	manual shaker

**MACCHINA**

Bocca aspirante	70Ø mm
Dimensioni	550 x 620mm
Altezza	1.150mm
Peso	42Kg

**OPZIONI**



**MEDIA FILTRANTE DISPONIBILE**



**PTFE ANT**

Filtro PTFE antistatico (Classe M EN 60335-2-69)

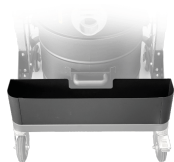


**HEPA 14**

Filtro assoluto (EN 1822)  
22.000 cm<sup>2</sup> superficie filtrante  
Classe H14 (EN 1822)  
Fibra di vetro

**OPZIONI**

**ALTRE OPZIONI**



**AB**

Cassetta porta accessori



**BX**

Contenitore in acciaio INOX AISI 304



**GX**

Camera e contenitore acciaio INOX AISI 304

**ACCESSORI**



**P13641  
STARTER KIT ANTISTATICO Ø 40MM**

Kit base di accessori antistatici per applicazione con aspiratore ATEX in diametro 40 mm



**P13641  
STARTER KIT ANTISTATICO Ø 40MM**

Kit base di accessori antistatici per applicazione con aspiratore ATEX in diametro 40 mm



**P13641  
STARTER KIT ANTISTATICO Ø 40MM**

Kit base di accessori antistatici per applicazione con aspiratore ATEX in diametro 40 mm