

SCHEDA TECNICA

XM20 INDUSTRIAL VACUUM

The XM20 is the most compact industrial vacuum cleaner for fine dust in the Depureco Industrial Vacuums range. Suction is generated thanks to two single-phase, two-stage motors with a Made in Italy by-pass cooling system that allow very high suction performance to be achieved. The material is sucked through a sturdy metal nozzle to which a 40mm or 50mm hose can be connected. Mounted inside is a 15,000 cm² Class M star filter with a filtering efficiency of 1 μ . The XM20 is equipped with a manual filter cleaning system that allows the filter to be cleaned easily and immediately. A convenient 20-liter capacity bottom-detachable container gives the option of disposing of the collected material easily and safely.

**POTENZA**
2,6 kW**SUPERFICIE**
15.000 cm²**CAPACITÀ**
20 Lt

HIGHLIGHTS

VACUUM UNIT

Suction is provided by 2 by-pass motors. Each motor is operated by an independent switch that allows the operator to control suction performance. The motors are located inside a robust enclosure, with an insulating sponge to maintain a low noise level.


FILTERING UNIT

Filtration is provided by a polyester filter. The star shape allows for a large filtering surface area in a compact space and ensures the passage of air even when the filter is dirty. The filter fabric is class M (BIA | EN 60335-2-69). This means that all particles down to 1 micron are stopped by the filter so that the vacuum unit and the operator are protected.


FILTER CLEANING SYSTEM

On one side of the chamber is an ergonomic manual filter shaker that allows the filter to be cleaned easily and quickly, removing dust and debris from the filter surface. Thanks to this clever cleaning system, the operator can continue working without changing or washing the filter.


COLLECTION BIN

The material is collected inside a painted container. Thanks to the 4 sturdy pivoting wheels, the container can be moved with ease, and the collected material can then be disposed of.

DATI TECNICI
MOTORE

Tipologia	By-Pass
Voltaggio	230V
Massimo vuoto	250mBar
Massima portata d'aria	380m3/h
Livello di rumorosità	72dB(A)
Motori	2
Frequenza	50/60Hz
Potenza	3,5HP

FILTRO PRIMARIO

Tipologia	Star filter
Diametro	350mm
Classe EN 60335-2-69	IFA BGIAM-PES
Media	Polyester
Pulizia filtro	Manual
Efficienza filtrante (IFA)	M class

MACCHINA

Bocca aspirante	50Ø mm
Dimensioni	516 X 545mm
Altezza	994mm
Peso	38Kg

OPZIONI

MEDIA FILTRANTE DISPONIBILE



HEPA 14
Filtro assoluto (EN 1822-5)



PTFE ANT
Filtro PTFE antistatico (Classe M EN 60335-2-69)



ANT M
Filtro antistatico (Classe M EN 60335-2-69)



MTF
Filtro teflonato (Classe M EN 60335-2-69)



NOMEX
Filtro resistente 250° Celsius

OPZIONI

ALTRE OPZIONI



BX
Contentore in acciaio INOX AISI 304



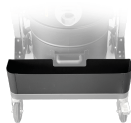
GX
Camera e contenitore acciaio INOX AISI 304



RC SCHUKO
Controllo remoto da elettroutensile (MAX 2000 W)



GRD
Messa a terra



AB
Cassetta porta accessori

ACCESSORI



P13638
STARTER KIT Ø 40MM
Kit base di accessori specifici per aspirazione solidi e liquidi in diametro 40 mm



P13638
STARTER KIT Ø 40MM
Kit base di accessori specifici per aspirazione solidi e liquidi in diametro 40 mm



P13638
STARTER KIT Ø 40MM
Kit base di accessori specifici per aspirazione solidi e liquidi in diametro 40 mm