

SINGLE-PHASE WET&DRY INDUSTRIAL VACUUM CLEANERS

# XM 35 JC

## CYCLONIC INDUSTRIAL VACUUM CLEANER



Guarda il video!



**POTENZA**  
2,6 kW - 3,5 HP



**APPLICAZIONE**  
Fine, dry and clogging  
powders



**CAPACITA'**  
45Lt

## VANTAGGI

- Ideal for fine dust
- Large surface area M-class filter
- Powerful, versatile and compact
- Multiple construction options available

## HIGHLIGHTS



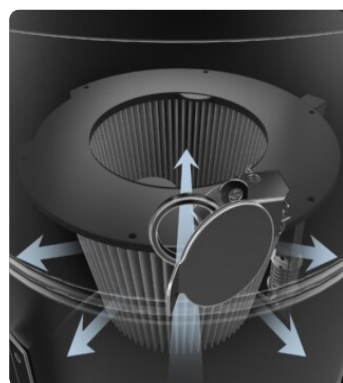
### SUCTION UNIT

Suction is provided by 2 by-pass motors controlled by independent switches, allowing the operator to control suction performance. The motors are located inside a robust enclosure, with an insulating sponge to maintain a low noise level.



### FILTER UNIT

Filtration is ensured by a Class M polyester cartridge filter (filtration efficiency 1 micron) with a high filtering surface area, which guarantees air passage even with a dirty filter.



### JET CLEAN FILTER CLEANING SYSTEM

Equipped with JetClean® filter cleaning system. Due to the different pressure between the outside and inside of the vacuum cleaner, the system generates a flow of air through the cartridge that detaches dust from the surface of the filter, keeping the filter efficient while working and without stopping suction.



### COLLECTION UNIT

The material is collected inside a coated bin complete with a handle that allows it to be released. Thanks to the 4 sturdy pivoting wheels, the container can be moved with ease and the collected material can then be disposed of.

## TECHNICAL DATA

### MOTORE

Tipologie	By-pass
Potenza	2,6 kW - 3,5 HP
Frequenza	50/60 Hz
Voltaggio	230 V
Vuoto in continuo	250 mBar
Massima portata d'aria	380 m3/h
Livello di rumorosità	72 dB(A)

### MACCHINA

Bocca aspirante	50 Ø mm
Sistema di raccolta	Steel container
Capacità	45 Lt
Dimensioni	585 x 545 mm
Altezza	1285 mm
Peso	45 Kg

### FILTRAZIONE

Tipologia filtro primario	Cartridge
Superficie filtrante	35000 cm2
Classe filtrazione EN 60335-2-69	M
Media	PTFE coated polyester
Sistema Pulizia filtro	Jet Clean
Ghigliottina JetClean	Included

**DOTAZIONI**



**FILTER CLOGGING INDICATOR**

Filter clogged or need to be replaced  
indicator light



**POWER SUPPLY CABLE**



**SHUKO TYPE PLUG**



**WHEELS**

Non-marking pivoting wheels



**WHEEL WITH BRAKE**

Non-marking wheel with integrated brake



**STEEL CONSTRUCTION**

Rugged industrial coated steel construction



**CYCLONIC EFFECT**

Tangential inlet and cyclone installed



**PUSH HANDLE**

## OPTIONS

### AVAILABLE FILTER MEDIA



**HEPA 13**  
Absolute filter (EN 1822)  
35.000 cm² filter surface  
H13 Class Filter (EN 1822)  
Glass fiber



**HEPA 14**  
Absolute filter (EN 1822)  
22.000 cm² filter surface  
H14 Class Filter (EN 1822)  
Glass fiber



**PTFE ANT**  
Antistatic PTFE filter (M class EN 60335-2-69)



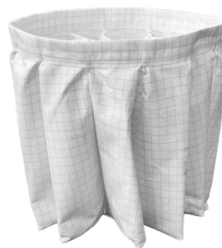
**PTFE**  
PTFE Filter (M class EN 60335-2-69)



**NOMEX**  
250° Celsius resistant filter



**MTF**  
Teflon filter (M class EN 60335-2-69)



**ANT M**  
Antistatic filter (M class EN 60335-2-69)

### STRUCTURE AND OPTIONS

**60<sup>Hz</sup>**

**60HZ**  
Available in 60Hz version



**3 YEARS WARRANTY**  
Purchasing the replacement filter along with the vacuum



**RC SCHUKO**  
Remote control by power tool (MAX 2000 W)



**LP**  
Endless Bag continuous roll collection system



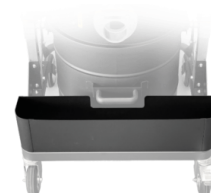
**KDP**  
Differential pressure KIT for bag



**GRD**  
Grounding



**BX**  
Stainless steel bin AISI 304



**AB**  
Accessories basket

## ACCESSORIES



### P12350

#### STARTER KIT Ø 50MM

Basic kit containing specific accessories for 50 mm diameter solids and liquids vacuuming



### P11887

#### WET & DRY KIT Ø 50MM

Kit containing specific accessories for 50 mm diameter solids and liquids vacuuming