

SINGLE-PHASE WET&DRY INDUSTRIAL VACUUM CLEANERS

# M65

## POWERFUL INDUSTRIAL VACUUM



Guarda il video!



**POTENZA**  
3,9 kW - 5,2 HP



**APPLICAZIONE**  
Powders, solids and  
shavings

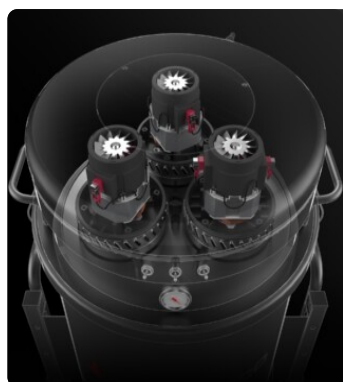


**CAPACITA'**  
65Lt

## VANTAGGI

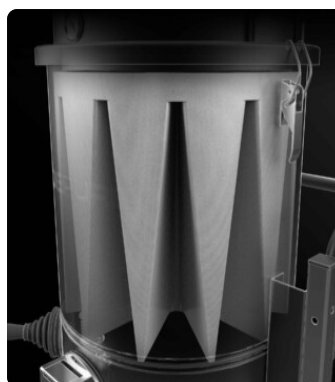
- Powerful and reliable steel industrial vacuum cleaner
- Specific filters for materials with different characteristics
- Ability to vacuum dust, solids and liquids
- Multiple construction options available

## HIGHLIGHTS



### SUCTION UNIT

Suction is provided by 3 by-pass motors operated by independent switches, allowing the operator to control suction performance. The motors are located inside a robust enclosure, with an insulating sponge to maintain a low noise level.



### FILTER UNIT

Filtration is provided by a polyester star filter in class M (filtration efficiency 1 micron) with a high filtering surface area, which guarantees the passage of air even with a dirty filter.



### FILTER CLEANING SYSTEM

An ergonomic manual filter shaker allows the filter to be cleaned easily and quickly, removing dust and debris from the surface of the filter.



### COLLECTION UNIT

The material is collected inside a coated container complete with a handle that allows its release. Thanks to the 4 sturdy pivoting wheels, the container can be moved with ease, and the collected material can then be disposed of.

## TECHNICAL DATA

### MOTORE

|                        |                 |
|------------------------|-----------------|
| Tipologie              | By-pass         |
| Potenza                | 3,9 kW - 5,2 HP |
| Frequenza              | 50/60 Hz        |
| Voltaggio              | 230 V           |
| Vuoto in continuo      | 250 mBar        |
| Massima portata d'aria | 570 m3/h        |
| Livello di rumorosità  | 72 dB(A)        |

### MACCHINA

|                     |                 |
|---------------------|-----------------|
| Bocca aspirante     | 70 Ø mm         |
| Sistema di raccolta | Steel container |
| Capacità            | 65 Lt           |
| Dimensioni          | 660 x 800 mm    |
| Altezza             | 1300 mm         |
| Peso                | 80 Kg           |

### FILTRAZIONE

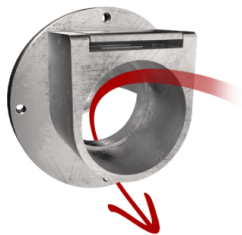
|                                  |           |
|----------------------------------|-----------|
| Tipologia filtro primario        | Star      |
| Superficie filtrante             | 24000 cm2 |
| Classe filtrazione EN 60335-2-69 | M         |
| Media                            | Polyester |
| Sistema Pulizia filtro           | Manual    |

## DOTAZIONI



### VACUUM GAUGE

Vacuum gauge for indication of filter clogged or in need of replacement



### DEFLECTOR

Internal deflector to protect the filter



### POWER SUPPLY CABLE



### SHUKO TYPE PLUG



### PUSH HANDLE



### WHEEL WITH BRAKE

Non-marking wheel with integrated brake



### WHEELS

Non-marking pivoting wheels



### STEEL CONSTRUCTION

Rugged industrial coated steel construction

## OPTIONS

### AVAILABLE FILTER CLEANING SYSTEMS



### SP

Automatic reverse jet cleaning system  
Antistatic M class filter (EN 60335-2-69), 3  
Polyester filter cartridges, 9 m<sup>2</sup> filter surface



### COM

Compressor on board  
Compressor fitted on the back cover

## AVAILABLE FILTER MEDIA



### PTFE ANT

Antistatic PTFE filter (M class EN 60335-2-69)



### PTFE

PTFE Filter (M class EN 60335-2-69)



### NOMEX

250° Celsius resistant filter



### MTF

Teflon filter (M class EN 60335-2-69)



### ANT M

Antistatic filter (M class EN 60335-2-69)



### HEPA 14

Absolute filter (EN 1822)  
28.000 cm² filter surface  
H14 Class Filter (EN 1822)  
Glass fiber

## STRUCTURE AND OPTIONS

**60<sup>Hz</sup>**

**60HZ**

Available in 60Hz version



**3 YEARS WARRANTY**

Purchasing the replacement filter along with the vacuum



**RC SCHUKO**

Remote control by power tool (MAX 2000 W)



**CYCLONIC EFFECT**

Tangential inlet and cyclone installed  
Tangential inlet + cyclone



**LP**

Endless Bag continuous roll collection system



**KDP**

Differential pressure KIT for bag



**GRD**

Grounding



**FLT**

Floater device



**BX**

Stainless steel bin AISI 304



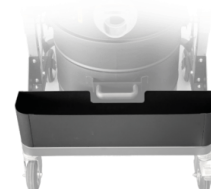
**GX**

Stainless steel bin and chamber AISI 304



**TX**

Stainless steel bin, chamber and frame AISI 304



**AB**

Accessories basket



**CONTAINER EMPTYING KIT**

System for easy container emptying using forklift lifting.

## ACCESSORIES



**P13970**  
**ARTICULATED SUCTION ARM D70**  
Flexible PVC suction arm, retrofittable on existing models - 1.2 mt length - d70



**P13640**  
**DRY KIT Ø 40MM**  
Kit containing specific accessories for 40 mm diameter dust and solids vacuuming



**P12348**  
**DRY KIT Ø 50MM**  
Kit containing specific accessories for 50 mm diameter dust and solids vacuuming



**P13638**  
**STARTER KIT Ø 40MM**  
Basic kit containing specific accessories for 40 mm diameter solids and liquids vacuuming



**P12350**  
**STARTER KIT Ø 50MM**  
Basic kit containing specific accessories for 50 mm diameter solids and liquids vacuuming



**P13639**  
**WET & DRY KIT Ø 40MM**  
Kit containing specific accessories for 40 mm diameter solids and liquids vacuuming



**P11887**  
**WET & DRY KIT Ø 50MM**  
Kit containing specific accessories for 50 mm diameter solids and liquids vacuuming