

SINGLE-PHASE WET&DRY INDUSTRIAL VACUUM CLEANERS

XM 20 OVEN

OVEN CLEANING INDUSTRIAL VACUUM CLEANER



Guarda il video!



POTENZA
2,6 kW - 3,5 HP



APPLICAZIONE
Hot material



CAPACITA'
20Lt

VANTAGGI

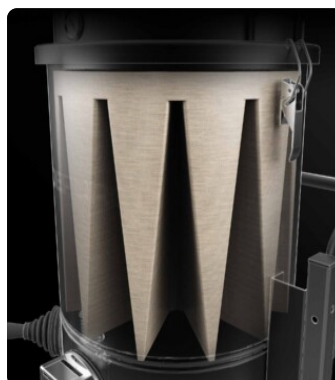
- Ideal for still-hot residues and crumbs in bakery and food industries
- Compact, handy and constructed of steel
- High-temperature resistant filter
- Accessory kit for interior oven cleaning included

HIGHLIGHTS



SUCTION UNIT

Suction is provided by 2 by-pass motors controlled by independent switches, allowing the operator to control suction performance. The motors are located inside a robust enclosure, with an insulating sponge to maintain a low noise level.



FILTER UNIT

Filtration is ensured by Nomex filter in class M (filtering efficiency 1 micron) with high filtering surface area, designed to withstand high temperatures and allow suction of incandescent material (up to 250°).



FILTER CLEANING SYSTEM

An ergonomic manual filter shaker allows the filter to be cleaned easily and quickly, removing dust and debris from the surface of the filter.



ACCESSORY KIT INCLUDED

A high-temperature resistant accessory kit including extensions is included in the standard equipment of the vacuum cleaner.

TECHNICAL DATA

MOTORE

Tipologie	By-pass
Potenza	2,6 kW - 3,5 HP
Frequenza	50/60 Hz
Voltaggio	230 V
Vuoto in continuo	250 mBar
Massima portata d'aria	380 m3/h
Livello di rumorosità	72 dB(A)

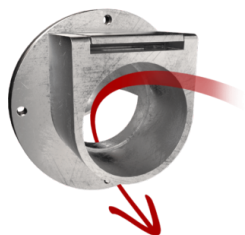
MACCHINA

Bocca aspirante	50 Ø mm
Sistema di raccolta	Steel container
Capacità	20 Lt
Dimensioni	515 x 545 mm
Altezza	994 mm
Peso	38 Kg
Kit accessori incluso	P11857 - Kit per pulizia forni

FILTRAZIONE

Tipologia filtro primario	Star
Superficie filtrante	15000 cm2
Classe filtrazione EN 60335-2-69	Nomex
Media	Polyester
Sistema Pulizia filtro	Manual

DOTAZIONI



DEFLECTOR
Internal deflector to protect the filter



SHUKO TYPE PLUG



FILTER CLOGGING INDICATOR
Filter clogged or need to be replaced
indicator light



POWER SUPPLY CABLE



WHEEL WITH BRAKE
Non-marking wheel with integrated brake



WHEELS
Non-marking pivoting wheels



STEEL CONSTRUCTION
Rugged industrial coated steel construction



NOMEX
250° Celsius resistant filter

OPTIONS

AVAILABLE FILTER MEDIA



HEPA 14
Absolute filter (EN 1822)
22.000 cm² filter surface
H14 Class Filter (EN 1822)
Glass fiber

STRUCTURE AND OPTIONS

60^{Hz}

60HZ

Available in 60Hz version



3 YEARS WARRANTY

Purchasing the replacement filter along with the vacuum



BX

Stainless steel bin AISI 304



GX

Stainless steel bin and chamber AISI 304



GRD

Grounding

ACCESSORIES



P11857

OVEN CLEANING KIT Ø 40MM

Oven cleaning accessories kit with 3-metre burn-proof extension lead and flexible metal hose.



P13638

STARTER KIT Ø 40MM

Basic kit containing specific accessories for 40 mm diameter solids and liquids vacuuming



P13640

DRY KIT Ø 40MM

Kit containing specific accessories for 40 mm diameter dust and solids vacuuming