

SINGLE-PHASE WET&DRY INDUSTRIAL VACUUM CLEANERS

# XM35 JC LP

## INDUSTRIAL VACUUM FOR SURFACE PREPARATION



Guarda il video!



**POTENZA**  
2,6 kW - 3,5 HP



**APPLICAZIONE**  
Toxic or hazardous dusts



**TIPO DI RACCOLTA**  
Endless bag

## VANTAGGI

- Designed for fine dust extraction
- Compact and easy to handle
- Large surface area M-class filter with integrated Jet Clean cleaning
- Endless Bag collection to avoid contact with dust

## HIGHLIGHTS



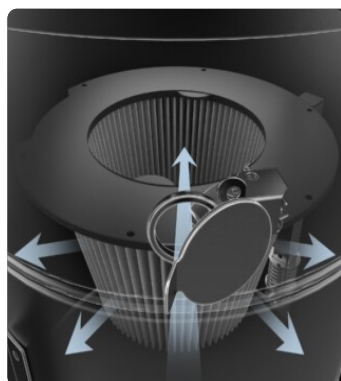
### SUCTION UNIT

Suction is provided by 2 by-pass motors controlled by independent switches, allowing the operator to control suction performance. The motors are located inside a robust enclosure, with an insulating sponge to maintain a low noise level.



### FILTER UNIT

Filtration is ensured by a Class M polyester cartridge filter (filtration efficiency 1 micron) with a high filtering surface area, which guarantees air passage even with a dirty filter.



### JET CLEAN FILTER CLEANING SYSTEM

Equipped with JetClean® filter cleaning system. Due to the different pressure between the outside and inside of the vacuum cleaner, the system generates a flow of air through the cartridge that detaches dust from the surface of the filter, keeping the filter efficient while working and without stopping suction.



### COLLECTION UNIT

The material is collected inside a coated bin complete with a handle that allows it to be released. Thanks to the 4 sturdy pivoting wheels, the container can be moved with ease and the collected material can then be disposed of.

## TECHNICAL DATA

### MOTORE

Tipologie	By-pass
Potenza	2,6 kW - 3,5 HP
Frequenza	50/60 Hz
Voltaggio	230 V
Vuoto in continuo	250 mBar
Massima portata d'aria	380 m3/h
Livello di rumorosità	72 dB(A)

### MACCHINA

Bocca aspirante	50 Ø mm
Sistema di raccolta	Endless Bag
Dimensioni	585 x 545 mm
Altezza	1395 mm
Peso	45 Kg

### FILTRAZIONE

Tipologia filtro primario	Cartridge
Superficie filtrante	35000 cm2
Classe filtrazione EN 60335-2-69	M
Media	PTFE coated polyester
Sistema Pulizia filtro	Jet Clean
Ghigliottina JetClean	Included

## DOTAZIONI



### FILTER CLOGGING INDICATOR

Filter clogged or need to be replaced indicator light



### SHUKO TYPE PLUG



### POWER SUPPLY CABLE



### PUSH HANDLE



### WHEEL WITH BRAKE

Non-marking wheel with integrated brake



### WHEELS

Non-marking pivoting wheels



### STEEL CONSTRUCTION

Rugged industrial coated steel construction

## OPTIONS

### AVAILABLE FILTER MEDIA



### HEPA 14

Absolute filter (EN 1822)  
22.000 cm<sup>2</sup> filter surface  
H14 Class Filter (EN 1822)  
Glass fiber



### HEPA 13

Absolute filter (EN 1822)  
35.000 cm<sup>2</sup> filter surface  
H13 Class Filter (EN 1822)  
Glass fiber

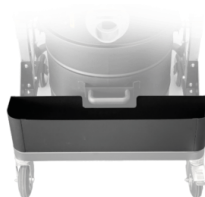
## STRUCTURE AND OPTIONS

**60<sup>Hz</sup>**

**60HZ**  
Available in 60Hz version



**3 YEARS WARRANTY**  
Purchasing the replacement filter along with the vacuum



**AB**  
Accessories basket



**RC SCHUKO**  
Remote control by power tool (MAX 2000 W)



**GRD**  
Grounding

## ACCESSORIES



**P12350**  
**STARTER KIT Ø 50MM**  
Basic kit containing specific accessories for 50 mm diameter solids and liquids vacuuming



**P12348**  
**DRY KIT Ø 50MM**  
Kit containing specific accessories for 50 mm diameter dust and solids vacuuming



**P13640**  
**DRY KIT Ø 40MM**  
Kit containing specific accessories for 40 mm diameter dust and solids vacuuming



**P13638**  
**STARTER KIT Ø 40MM**  
Basic kit containing specific accessories for 40 mm diameter solids and liquids vacuuming