

ATEX AND ACD VACUUM CLEANERS

BL 45 3D Z22

ATEX INDUSTRIAL VACUUM CLEANER



Guarda il video!



POTENZA
1,1 kW - 1,5 HP



APPLICAZIONE
Powders, solids and
shavings



CAPACITA'
45Lt

VANTAGGI

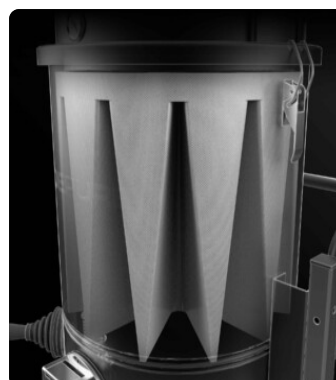
- Suitable and safe for intensive work in Atex 22 zones
- Brushless motor, antistatic filtration and full grounding for maximum safety.
- Compact, sturdy and easy to handle
- High-efficiency antistatic filtration with built-in semi-automatic cleaning system

HIGHLIGHTS



SUCTION UNIT

The vacuum unit is a powerful Brushless motor, suitable for continuous work. Two filters are installed on the vacuum cleaner head: one to protect the motor and the other placed on the air outlet. The air that comes out is totally filtered



FILTER UNIT

Filtration is provided by a polyester star filter in class M (filtration efficiency 1 micron) with a high filtering surface area, which guarantees the passage of air even with a dirty filter.



FILTER CLEANING SYSTEM

An ergonomic manual filter shaker allows the filter to be cleaned easily and quickly, removing dust and debris from the surface of the filter.



COLLECTION UNIT

The material is collected inside an AISI 304 stainless steel container, complete with a metal handle that allows its release, to avoid any sparks that could be generated by the electrostatic charge.

TECHNICAL DATA

MOTORE

Tipologie	Brushless
Potenza	1,1 kW - 1,5 HP
Frequenza	50/60 Hz
Voltaggio	230 V
Vuoto in continuo	230 mBar
Massima portata d'aria	220 m3/h
Livello di rumorosità	72 dB(A)

MACCHINA

Marcatura ATEX	II 3D Ex htc IIIB T140°C Dc
Categoria EX	3D
Temperatura di utilizzo	-10 / +40 C°
Bocca aspirante	70 Ø mm
Sistema di raccolta	AISI304 stainless steel container
Capacità	45 Lt
Dimensioni	550 x 620 mm
Altezza	1303 mm
Peso	45 Kg

FILTRAZIONE

Tipologia filtro primario	Star
Superficie filtrante	15000 cm2
Classe filtrazione EN 60335-2-69	M
Media	Antistatic polyester
Sistema Pulizia filtro	Manual

DOTAZIONI



ATEX CERTIFICATION



POWER SUPPLY CABLE



PLUG
3-pin industrial plug



VACUUM GAUGE
Vacuum gauge for indication of filter clogged or in need of replacement



WHEEL WITH BRAKE
Non-marking wheel with integrated brake



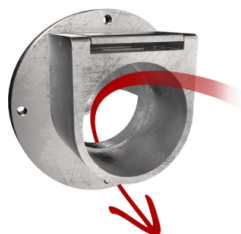
GRD
Grounding



GX
Stainless steel bin and chamber AISI 304



ANT M
Antistatic filter (M class EN 60335-2-69)



DEFLECTOR
Internal deflector to protect the filter



PUSH HANDLE

OPTIONS

AVAILABLE FILTER MEDIA



HEPA 14
Absolute filter (EN 1822-5)



PTFE ANT
Antistatic PTFE filter (M class EN 60335-2-69)

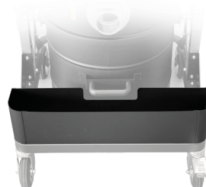
STRUCTURE AND OPTIONS



60HZ
Available in 60Hz version



3 YEARS WARRANTY
Purchasing the replacement filter along with the vacuum



AB
Accessories basket

ACCESSORIES



P12377
ANTISTATIC KIT PRO Ø 50MM
Kit containing antistatic accessories for application with 50 mm diameter ATEX vacuum cleaner



P12378
ANTISTATIC STARTER KIT Ø 50MM
Basic kit containing antistatic accessories for application with 50 mm diameter ATEX vacuum cleaner