

ATEX AND ACD VACUUM CLEANERS

XM 20 T M 3GD

COMPACT PORTABLE INDUSTRIAL VACUUM CLEANER ATEX



POTENZA
1,8 kW - 2,4 HP



APPLICAZIONE
Powders, solids and
shavings

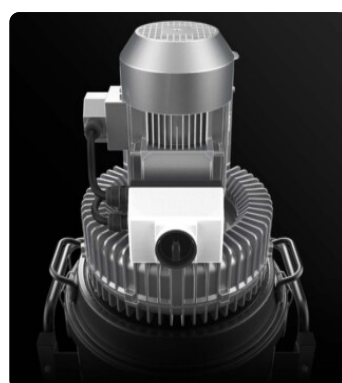


CAPACITA'
20Lt

VANTAGGI

- Suitable and safe for intensive work in Atex zones 2 or 22
- Compact, sturdy and easy to handle
- Atex-certified side channel blower
- High-efficiency antistatic filtration with built-in semi-automatic cleaning system

HIGHLIGHTS



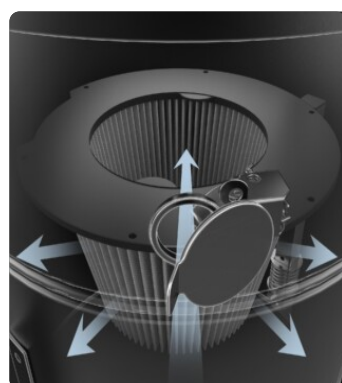
SUCTION UNIT

The suction unit is a manufacturer-certified Atex side channel blower with direct coupling between motor and impeller. The Side Channel Blower is equipped with a safety valve that ensures continuous work, without any maintenance.



FILTER UNIT

Filtration is ensured by a Class M polyester cartridge filter (filtration efficiency 1 micron) with a high filtering surface area, which guarantees air passage even with a dirty filter.



JET CLEAN FILTER CLEANING SYSTEM

Equipped with JetClean® filter cleaning system. Due to the different pressure between the outside and inside of the vacuum cleaner, the system generates a flow of air through the cartridge that detaches dust from the surface of the filter, keeping the filter efficient while working and without stopping suction.



COLLECTION UNIT

The material is collected inside an AISI 304 stainless steel container, complete with a metal handle that allows its release, to avoid any sparks that could be generated by the electrostatic charge.

TECHNICAL DATA

MOTORE

Tipologie	Atex side channel blower
Potenza	1,8 kW - 2,4 HP
Frequenza	50/60 Hz
Voltaggio	230 V
Vuoto in continuo	180 mBar
Massima portata d'aria	240 m3/h
Classe di isolamento	55 IP
Livello di rumorosità	72 dB(A)

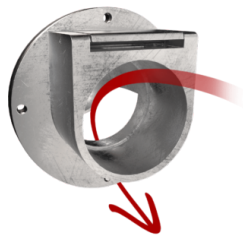
MACCHINA

Marcatura ATEX	II 3 GD Ex htc IIIB T140°C Gc/Dc
Categoria EX	3GD
Temperatura di utilizzo	-10 / +40 C°
Bocca aspirante	50 Ø mm
Sistema di raccolta	AISI304 stainless steel container
Capacità	20 Lt
Dimensioni	516 x 545 mm
Altezza	1050 mm
Peso	57 Kg
Valvola di sicurezza	Pressure relief valve

FILTRAZIONE

Tipologia filtro primario	Cartridge
Superficie filtrante	35000 cm2
Classe filtrazione EN 60335-2-69	M
Media	Antistatic polyester
Sistema Pulizia filtro	Jet Clean
Ghigliottina JetClean	Included

DOTAZIONI



DEFLECTOR
Internal deflector to protect the filter



ATEX CERTIFICATION



PLUG
3-pin industrial plug



PRV
Pressure relief valve installed



GRD
Grounding



BX
Stainless steel bin AISI 304



JC
Jet Clean



ANT M
Antistatic filter (M class EN 60335-2-69)



WHEEL WITH BRAKE
Non-marking wheel with integrated brake



POWER SUPPLY CABLE



VACUUM GAUGE
Vacuum gauge for indication of filter clogged or in need of replacement

OPTIONS

AVAILABLE FILTER MEDIA



HEPA 14

Absolute filter (EN 1822)
28.000 cm² filter surface
H14 Class Filter (EN 1822)
Glass fiber

STRUCTURE AND OPTIONS

60^{Hz}

60HZ

Available in 60Hz version



3 YEARS WARRANTY

Purchasing the replacement filter along with the vacuum

ACCESSORIES



P13642

ANTISTATIC KIT PRO Ø 40MM

Kit containing antistatic accessories for application with 40 mm diameter ATEX vacuum cleaner



P13641

ANTISTATIC STARTER KIT Ø 40MM

Basic kit containing antistatic accessories for application with 40 mm diameter ATEX vacuum cleaner