

ATEX AND ACD VACUUM CLEANERS

# XM 20 T T 3GD

## COMPACT PORTABLE INDUSTRIAL VACUUM CLEANER ATEX



**POTENZA**  
2,2 kW - 3 HP



**APPLICAZIONE**  
Powders, solids and  
shavings

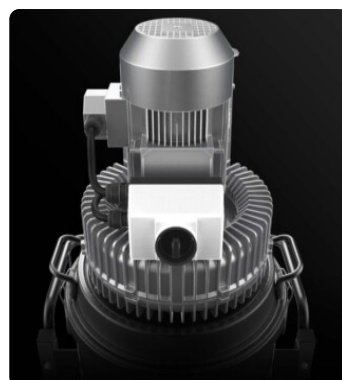


**CAPACITA'**  
20Lt

## VANTAGGI

- Suitable and safe for intensive work in Atex zones 2 or 22
- Compact, sturdy and easy to handle
- Atex-certified side channel blower
- High-efficiency antistatic filtration with built-in semi-automatic cleaning system

## HIGHLIGHTS



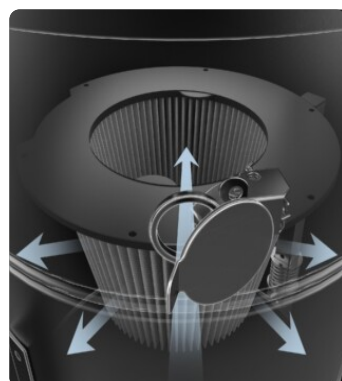
### SUCTION UNIT

The suction unit is a manufacturer-certified Atex side channel blower with direct coupling between motor and impeller. The Side Channel Blower is equipped with a safety valve that ensures continuous work, without any maintenance.



### FILTER UNIT

Filtration is ensured by a Class M polyester cartridge filter (filtration efficiency 1 micron) with a high filtering surface area, which guarantees air passage even with a dirty filter.



### JET CLEAN FILTER CLEANING SYSTEM

Equipped with JetClean® filter cleaning system. Due to the different pressure between the outside and inside of the vacuum cleaner, the system generates a flow of air through the cartridge that detaches dust from the surface of the filter, keeping the filter efficient while working and without stopping suction.



### COLLECTION UNIT

The material is collected inside an AISI 304 stainless steel container, complete with a metal handle that allows its release, to avoid any sparks that could be generated by the electrostatic charge.

## TECHNICAL DATA

### MOTORE

Tipologie	Atex side channel blower
Potenza	2,2 kW - 3 HP
Frequenza	50/60 Hz
Voltaggio	400 V
Vuoto in continuo	180 mBar
Massima portata d'aria	240 m3/h
Classe di isolamento	65 IP
Livello di rumorosità	72 dB(A)

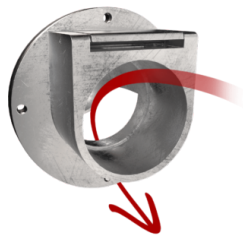
### MACCHINA

Marcatura ATEX	II 3 GD Ex htc IIIB T140°C Gc/Dc
Categoria EX	3GD
Temperatura di utilizzo	-10 / +40 C°
Bocca aspirante	50 Ø mm
Sistema di raccolta	AISI304 stainless steel container
Capacità	20 Lt
Dimensioni	516 x 545 mm
Altezza	1050 mm
Peso	57 Kg
Valvola di sicurezza	Pressure relief valve

### FILTRAZIONE

Tipologia filtro primario	Cartridge
Superficie filtrante	35000 cm2
Classe filtrazione EN 60335-2-69	M
Media	Antistatic polyester
Sistema Pulizia filtro	Jet Clean
Ghigliottina JetClean	Included

## DOTAZIONI



### DEFLECTOR

Internal deflector to protect the filter



### ATEX CERTIFICATION



### PLUG

3-pin industrial plug



### PRV

Pressure relief valve installed



### GRD

Grounding



### BX

Stainless steel bin AISI 304



### JC

Jet Clean



### ANT M

Antistatic filter (M class EN 60335-2-69)



### WHEEL WITH BRAKE

Non-marking wheel with integrated brake



### POWER SUPPLY CABLE



### VACUUM GAUGE

Vacuum gauge for indication of filter clogged or in need of replacement

## OPTIONS

### AVAILABLE FILTER MEDIA



#### HEPA 14

Absolute filter (EN 1822)  
28.000 cm<sup>2</sup> filter surface  
H14 Class Filter (EN 1822)  
Glass fiber

### STRUCTURE AND OPTIONS

**60<sup>Hz</sup>**

#### 60HZ

Available in 60Hz version



#### 3 YEARS WARRANTY

Purchasing the replacement filter along with the vacuum

## ACCESSORIES



#### P13642

##### ANTISTATIC KIT PRO Ø 40MM

Kit containing antistatic accessories for application with 40 mm diameter ATEX vacuum cleaner



#### P13641

##### ANTISTATIC STARTER KIT Ø 40MM

Basic kit containing antistatic accessories for application with 40 mm diameter ATEX vacuum cleaner