

ATEX AND ACD VACUUM CLEANERS

# TB 18 T 3GD Z2-22

## ATEX INDUSTRIAL VACUUM CLEANER



Watch the video!



**POWER**  
1,8 kW - 2,4 HP



**APPLICATION**  
Powders, solids and  
shavings



**CAPACITY**  
45Lt

## FEATURES

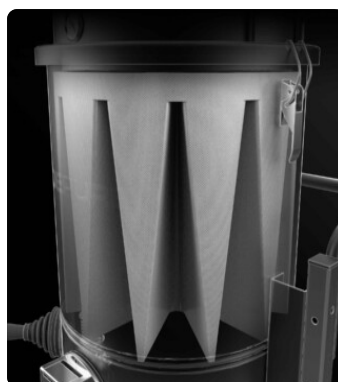
- Suitable and safe for intensive work in Atex zones 2 or 22
- Compact, sturdy and easy to handle
- Atex-certified side channel blower
- High-efficiency antistatic filtration with built-in semi-automatic cleaning system

## HIGHLIGHTS



### SUCTION UNIT

The suction unit is a manufacturer-certified Atex side channel blower with direct coupling between motor and impeller. The Side Channel Blower is equipped with a safety valve that ensures continuous work, without any maintenance.



### FILTER UNIT

Filtration is provided by a polyester star filter in class M (filtration efficiency 1 micron) with a high filtering surface area, which guarantees the passage of air even with a dirty filter.



### FILTER CLEANING SYSTEM

An ergonomic manual filter shaker allows the filter to be cleaned easily and quickly, removing dust and debris from the surface of the filter.



### COLLECTION UNIT

The material is collected inside an AISI 304 stainless steel container, complete with a metal handle that allows its release, to avoid any sparks that could be generated by the electrostatic charge.

## TECHNICAL DATA

### MOTOR

Typologies	Atex side channel blower
Power	1,8 kW - 2,4 HP
Frequency	50/60 Hz
Voltage	400 V
Vacuum in continuous run	180 mBar
Maximum air flow	240 m3/h
Insulation class	65 IP
Noise level	72 dB(A)

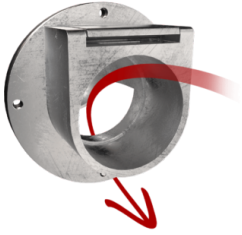
### MACHINE

Atex marking	II 3 GD Ex htc IIIB T140°C Gc/Dc
EX category	3GD
Operating temperature	-10 / +40 C°
Suction inlet	50 Ø mm
Collection system	AISI304 stainless steel container
Capacity	45 Lt
Dimensions	550 x 620 mm
Height	1400 mm
Weight	50 Kg
Safety valve	Pressure relief valve

### FILTRATION

Primary filter type	Star
Filter surface	15.000 cm2
EN 60335-2-69 filtration class	M
Media	Antistatic polyester
Filter Cleaning System	Manual

## FEATURES



**DEFLECTOR**  
Internal deflector to protect the filter



**ATEX CERTIFICATION**



**PUSH HANDLE**



**4-PIN ATEX INDUSTRIAL PLUG**



**VACUUM GAUGE**  
Vacuum gauge for indication of filter clogged or in need of replacement



**POWER SUPPLY CABLE**



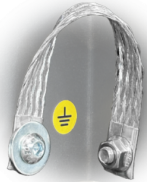
**WHEEL WITH BRAKE**  
Non-marking wheel with integrated brake



**STEEL CONSTRUCTION**  
Rugged industrial coated steel construction



**PRV**  
Pressure relief valve installed



**GRD**  
Grounding



**GX**  
Stainless steel bin and chamber AISI 304

## OPTIONS

### AVAILABLE FILTER MEDIA



#### HEPA 14

Absolute filter (EN 1822)  
 28.000 cm² filter surface  
 H14 Class Filter (EN 1822)  
 Glass fiber

### STRUCTURE AND OPTIONS

# 60<sup>Hz</sup>

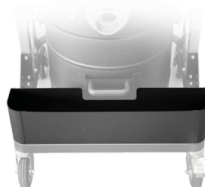
#### 60HZ

Available in 60Hz version



#### 3 YEARS WARRANTY

Purchasing the replacement filter along with the vacuum



#### AB

Accessories basket



#### LP

Endless Bag continuous roll collection system

## ACCESSORIES



#### P12377

##### ANTISTATIC KIT PRO Ø 50MM

Kit containing antistatic accessories for application with 50 mm diameter ATEX vacuum cleaner



#### P13642

##### ANTISTATIC KIT PRO Ø 40MM

Kit containing antistatic accessories for application with 40 mm diameter ATEX vacuum cleaner



#### P12378

##### ANTISTATIC STARTER KIT Ø 50MM

Basic kit containing antistatic accessories for application with 50 mm diameter ATEX vacuum cleaner



#### P13641

##### ANTISTATIC STARTER KIT Ø 40MM

Basic kit containing antistatic accessories for application with 40 mm diameter ATEX vacuum cleaner