

PNEUMATIC INDUSTRIAL VACUUM CLEANERS

AC 65

PNEUMATIC INDUSTRIAL VACUUM



APPLICAZIONE
Powders, solids and
shavings

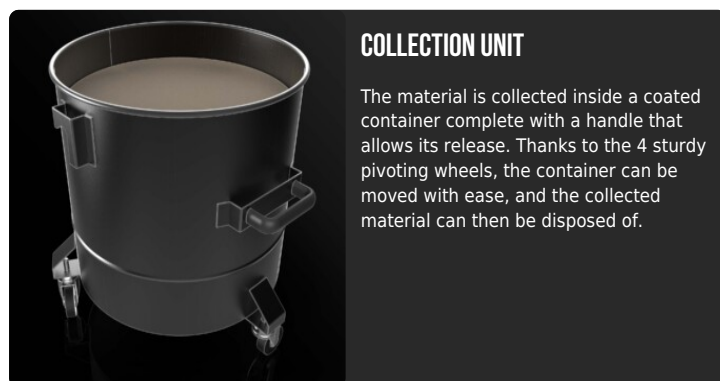
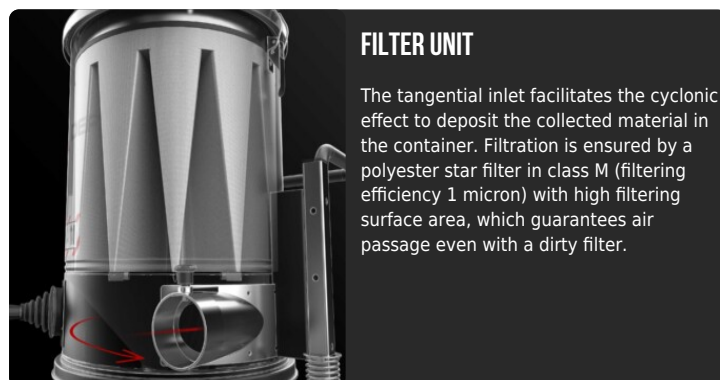
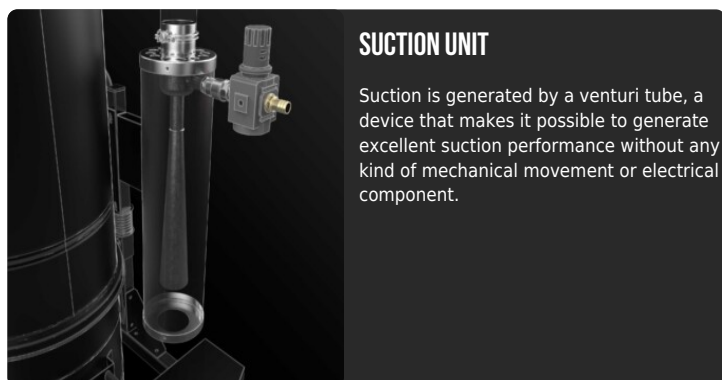


CAPACITA'
65Lt

VANTAGGI

- Powered by compressed air
- High filtration capacity and efficiency
- Sturdy painted steel construction
- Multiple construction options available

HIGHLIGHTS



TECHNICAL DATA

MOTORE

| Tipologie | Venturi ejector |
|------------------------|-----------------|
| Vuoto in continuo | 500 mBar |
| Massima portata d'aria | 250 m3/h |
| Livello di rumorosità | 80 dB(A) |
| Aria richiesta | 2500 lt/min |
| Pressione richiesta | 6 - 8 Bar |

MACCHINA

| | |
|---------------------|-----------------|
| Bocca aspirante | 80 Ø mm |
| Sistema di raccolta | Steel container |
| Capacità | 65 Lt |
| Dimensioni | 660 x 800 mm |
| Altezza | 1200 mm |
| Peso | 62 Kg |

FILTRAZIONE

| | |
|----------------------------------|-----------|
| Tipologia filtro primario | Star |
| Superficie filtrante | 24000 cm2 |
| Classe filtrazione EN 60335-2-69 | M |
| Media | Polyester |
| Sistema Pulizia filtro | Manual |

DOTAZIONI



COMPRESSED AIR SUPPLY VALVE



VACUUM GAUGE

Vacuum gauge for indication of filter clogged or in need of replacement



PUSH HANDLE



WHEEL WITH BRAKE

Non-marking wheel with integrated brake



WHEELS

Non-marking pivoting wheels



STEEL CONSTRUCTION

Rugged industrial coated steel construction



CYCLONIC EFFECT

Tangential inlet and cyclone installed

OPTIONS

AVAILABLE FILTER MEDIA



HEPA 14
Absolute filter (EN 1822)
22.000 cm² filter surface
H14 Class Filter (EN 1822)
Glass fiber



PTFE ANT
Antistatic PTFE filter (M class EN 60335-2-69)



PTFE
PTFE Filter (M class EN 60335-2-69)



NOMEX
250° Celsius resistant filter



MTF
Teflon filter (M class EN 60335-2-69)



ANT M
Antistatic filter (M class EN 60335-2-69)

STRUCTURE AND OPTIONS



3 YEARS WARRANTY
Purchasing the replacement filter along with the vacuum



LP
Endless Bag continuous roll collection system



GRD
Grounding



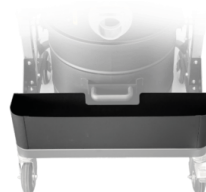
FLT
Floater device



BX
Stainless steel bin AISI 304



GX
Stainless steel bin and chamber AISI 304



AB
Accessories basket

ACCESSORIES



P13638
STARTER KIT Ø 40MM
 Basic kit containing specific accessories for 40 mm diameter solids and liquids vacuuming



P12350
STARTER KIT Ø 50MM
 Basic kit containing specific accessories for 50 mm diameter solids and liquids vacuuming



P13639
WET & DRY KIT Ø 40MM
 Kit containing specific accessories for 40 mm diameter solids and liquids vacuuming



P11887
WET & DRY KIT Ø 50MM
 Kit containing specific accessories for 50 mm diameter solids and liquids vacuuming



P13640
DRY KIT Ø 40MM
 Kit containing specific accessories for 40 mm diameter dust and solids vacuuming



P12348
DRY KIT Ø 50MM
 Kit containing specific accessories for 50 mm diameter dust and solids vacuuming