

HEAVY DUTY THREE-PHASE INDUSTRIAL VACUUM CLEANERS

ECOBULL M SP

THREE-PHASE INDUSTRIAL VACUUM WITH AUTOMATIC FILTER



POTENZA
1,8 kW - 2,4 HP



APPLICAZIONE
Fine, dry and clogging
powders



CAPACITA'
65Lt

VANTAGGI

- Industrial steel vacuum cleaner, powerful and reliable
- Suitable for continuous work, 24 hours a day, 7 days a week
- Class M large surface filters with automatic cleaning SP
- Multiple construction options available

HIGHLIGHTS



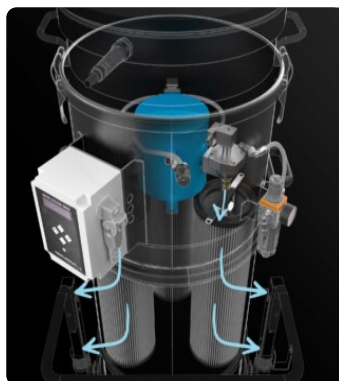
SUCTION UNIT

The suction unit is a side channel blower with direct coupling between motor and impeller. The turbine is equipped with a safety valve to ensure continuous, maintenance-free operation. A metal silencer is included as standard in the turbine to ensure a low noise level.



FILTER UNIT

Filtration is ensured by polyester cartridge filters in class M (filtration efficiency 1 micron) with high filtering surface area, which guarantees the passage of air even with dirty filter.



SP FILTER CLEANING SYSTEM

Automatic filter cleaning system in reverse flow of air at 6 bar (compressed air not supplied as standard). Each filter is cleaned at regular, adjustable intervals alternately without interrupting suction. Ideal for fine and difficult dust.



COLLECTION UNIT

The material is collected inside a coated container complete with a handle that allows its release. Thanks to the 4 sturdy pivoting wheels, the container can be moved with ease, and the collected material can then be disposed of.

TECHNICAL DATA

MOTORE

Tipologie	Side channel blower
Potenza	1,8 kW - 2,4 HP
Frequenza	50/60 Hz
Voltaggio	230 V
Vuoto in continuo	230 mBar
Massima portata d'aria	240 m3/h
Classe di isolamento	55 F IP
Livello di rumorosità	74 dB(A)

MACCHINA

Bocca aspirante	70 Ø mm
Sistema di raccolta	Steel container
Capacità	65 Lt
Dimensioni	660 x 800 mm
Altezza	1880 mm
Peso	85 Kg
Valvola di sicurezza	Pressure relief valve

FILTRAZIONE

Tipologia filtro primario	3x Cartridges
Superficie filtrante	90000 cm2
Classe filtrazione EN 60335-2-69	M
Media	Antistatic polyester
Sistema Pulizia filtro	Automatic SP

DOTAZIONI



VACUUM GAUGE

Vacuum gauge for indication of filter clogged or in need of replacement



POWER SUPPLY CABLE

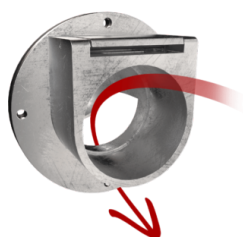


PLUG

3-pin industrial plug



PUSH HANDLE



DEFLECTOR

Internal deflector to protect the filter



WHEEL WITH BRAKE

Non-marking wheel with integrated brake



WHEELS

Non-marking pivoting wheels



STEEL CONSTRUCTION

Rugged industrial coated steel construction



PRV

Pressure relief valve installed

OPTIONS

AVAILABLE FILTER MEDIA



HEPA 14

Absolute filter (EN 1822)
22.000 cm² filter surface
H14 Class Filter (EN 1822)
Glass fiber

STRUCTURE AND OPTIONS

60^{Hz}

60HZ
Available in 60Hz version



3 YEARS WARRANTY
Purchasing the replacement filter along with the vacuum



ATEX CERTIFICATION



CYCLONIC EFFECT
Tangential inlet and cyclone installed
Tangential inlet + cyclone



LP
Endless Bag continuous roll collection system



KDP
Differential pressure KIT for bag



GRD
Grounding



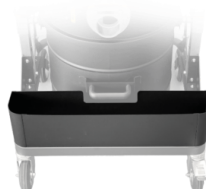
FLT
Floater device



GX
Stainless steel bin and chamber AISI 304



BX
Stainless steel bin AISI 304



AB
Accessories basket



100 LT
100 Lt bin



CONTAINER EMPTYING KIT
System for easy container emptying using forklift lifting.

ACCESSORIES


P13970
ARTICULATED SUCTION ARM D70
 Flexible PVC suction arm, retrofittable on existing models - 1.2 mt length - d70



P13638
STARTER KIT Ø 40MM
 Basic kit containing specific accessories for 40 mm diameter solids and liquids vacuuming



P12350
STARTER KIT Ø 50MM
 Basic kit containing specific accessories for 50 mm diameter solids and liquids vacuuming



P13639
WET & DRY KIT Ø 40MM
 Kit containing specific accessories for 40 mm diameter solids and liquids vacuuming



P11887
WET & DRY KIT Ø 50MM
 Kit containing specific accessories for 50 mm diameter solids and liquids vacuuming



P13640
DRY KIT Ø 40MM
 Kit containing specific accessories for 40 mm diameter dust and solids vacuuming



P12348
DRY KIT Ø 50MM
 Kit containing specific accessories for 50 mm diameter dust and solids vacuuming