

WELDING FUME EXTRACTORS

# XM TORCH 1M

## INDUSTRIAL VACUUM CLEANER FOR WELDING TORCHES



Guarda il video!



POTENZA  
1,3 kW - 1,8 HP



APPLICAZIONE  
Welding fumes



CAPACITA'  
20Lt

## VANTAGGI

- Compact and easy to handle
- Multi-stage filtration for maximum operator safety
- Sturdy painted steel construction
- Possibility of remote control directly from the welding machine

## HIGHLIGHTS



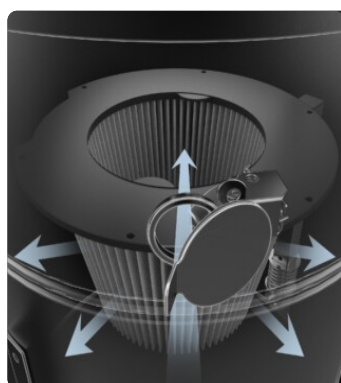
### SUCTION UNIT

Suction is provided by 1/2 by-pass motors controlled by independent switches, allowing the operator to control suction performance. The motors are located inside a robust enclosure, with an insulating sponge to maintain a low noise level.



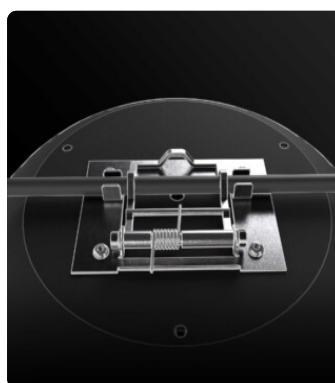
### FILTER UNIT

Filtration is ensured by a Class M polyester cartridge filter (filtration efficiency 1 micron) with a high filtering surface area, which guarantees air passage even with a dirty filter.



### JET CLEAN FILTER CLEANING SYSTEM

Equipped with JetClean® filter cleaning system. Due to the different pressure between the outside and inside of the vacuum cleaner, the system generates a flow of air through the cartridge that detaches dust from the surface of the filter, keeping the filter efficient while working and without stopping suction.



### REMOTE CONTROL

Passing the electric cable of the welding machine through the clip, the vacuum unit automatically begins suction when the operator starts welding and ends a few seconds after the welding machine is turned off.

## TECHNICAL DATA

### MOTORE

Tipologie	By-pass
Potenza	1,3 kW - 1,8 HP
Frequenza	50/60 Hz
Voltaggio	230 V
Vuoto in continuo	250 mBar
Massima portata d'aria	190 m3/h
Livello di rumorosità	72 dB(A)
Controllo Remoto	Grounding cable

### MACCHINA

Bocca aspirante	50 Ø mm
Sistema di raccolta	Steel container
Capacità	20 Lt
Dimensioni	534 x 471 mm
Altezza	983 mm
Peso	36 Kg

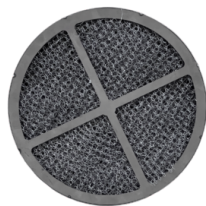
### FILTRAZIONE

Tipologia filtro primario	Cartridge
Superficie filtrante	35000 cm2
Classe filtrazione EN 60335-2-69	M
Media	PTFE coated polyester
Sistema Pulizia filtro	Jet Clean
Ghigliottina JetClean	Included

## DOTAZIONI



**AIR FLOW REGULATOR**



**ANTI-SPARK FILTER**

Protective filter that prevents the passage of sparks



**SHUKO TYPE PLUG**



**POWER SUPPLY CABLE**



**WHEEL WITH BRAKE**

Non-marking wheel with integrated brake



**WHEELS**

Non-marking pivoting wheels



**STEEL CONSTRUCTION**

Rugged industrial coated steel construction



**FILTER CLOGGING INDICATOR**

Filter clogged or need to be replaced indicator light

## OPTIONS

### AVAILABLE FILTER MEDIA



**HEPA 13**

Absolute filter (EN 1822)  
35.000 cm<sup>2</sup> filter surface  
H13 Class Filter (EN 1822)  
Glass fiber



**HEPA 14**

Absolute filter (EN 1822)  
22.000 cm<sup>2</sup> filter surface  
H14 Class Filter (EN 1822)  
Glass fiber

## STRUCTURE AND OPTIONS

**60<sup>Hz</sup>**

**60HZ**  
Available in 60Hz version



**3 YEARS WARRANTY**  
Purchasing the replacement filter along with the vacuum



**BX**  
Stainless steel bin AISI 304



**GRD**  
Grounding

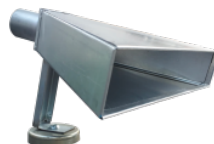
## ACCESSORIES



**P13638**  
**STARTER KIT Ø 40MM**  
Basic kit containing specific accessories for 40 mm diameter solids and liquids vacuuming



**P12301**  
**REDUCTION RUBBER SLEEVE FOR "PUR" HOSE Ø 50/40**  
Antistatic carbon-filled rubber sleeve for 50/40 mm diameter polyurethane spiral hose



**P12000**  
**SUCTION HOOD (400X50MM)**  
Galvanised steel suction hood for welding fumes or suspended dusts. Connection for 50mm diameter pipe with bracket and magnet for positionin ...