

ATEX AND ACD VACUUM CLEANERS

ECOBULL T H ACD

INDUSTRIAL VACUUM CLEANER FOR COMBUSTIBLE DUSTS



POTENZA
3 kW - 4 HP



APPLICAZIONE
Combustible dusts

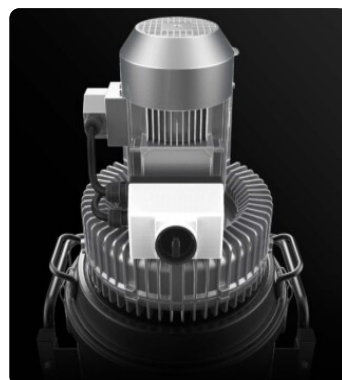


CAPACITA'
65Lt

VANTAGGI

- Classified ACD for suction of combustible dust in areas not classified Atex
- 2 levels of progressive filtration
- Compact and easy to maintain
- Vacuum gauge to monitor performance

HIGHLIGHTS



SUCTION UNIT

The suction unit is a side channel blower with direct coupling between motor and impeller. The turbine is equipped with a safety valve to ensure continuous, maintenance-free operation. A metal silencer is included as standard in the turbine to ensure a low noise level.



FILTER UNIT

Filtration is provided by two progressive efficiency filters installed in series: a primary star polyester filter class M (filtering efficiency 1 micron) with high filtering surface area and an absolute secondary filter in class H14.



DESIGNED FOR COMBUSTIBLE DUST

The vacuum unit is a powerful Brushless motor, suitable for continuous work. Two filters are installed on the vacuum cleaner head: one to protect the motor and the other placed on the air outlet. The air that escapes is totally carbon-free.



COLLECTION UNIT

The material is collected inside an AISI 304 stainless steel container, complete with a metal handle that allows its release, to avoid any sparks that could be generated by the electrostatic charge.

TECHNICAL DATA

MOTORE

Tipologie	Side channel blower
Potenza	3 kW - 4 HP
Frequenza	50/60 Hz
Voltaggio	400 V
Vuoto in continuo	230 mBar
Massima portata d'aria	340 m3/h
Classe di isolamento	55 F IP
Livello di rumorosità	72 dB(A)

MACCHINA

Bocca aspirante	70 Ø mm
Sistema di raccolta	AISI304 stainless steel container
Capacità	65 Lt
Dimensioni	660 x 800 mm
Altezza	1530 mm
Peso	88 Kg
Valvola di sicurezza	Pressure relief valve

FILTRAZIONE

Tipologia filtro primario	Star
Superficie filtrante	24000 cm2
Classe filtrazione EN 60335-2-69	M
Media	Antistatic polyester
Sistema Pulizia filtro	Manual
Filtro Assoluto Secondario	H14 - Included

DOTAZIONI



DEFLECTOR
Internal deflector to protect the filter



PUSH HANDLE



SHUKO TYPE PLUG



VACUUM GAUGE
Vacuum gauge for indication of filter clogged or in need of replacement



POWER SUPPLY CABLE



WHEEL WITH BRAKE
Non-marking wheel with integrated brake



WHEELS
Non-marking pivoting wheels



STEEL CONSTRUCTION
Rugged industrial coated steel construction



PRV
Pressure relief valve installed



GRD
Grounding



BX
Stainless steel bin AISI 304



HEPA 14
Absolute filter (EN 1822)



ANT M
Antistatic filter (M class EN 60335-2-69)

OPTIONS

AVAILABLE FILTER MEDIA



PTFE ANT

Antistatic PTFE filter (M class EN 60335-2-69)

AVAILABLE FILTER CLEANING SYSTEMS



SP

Automatic reverse jet cleaning system
Antistatic M class filter (EN 60335-2-69), 3
Polyester filter cartridges, 9 m² filter surface



PSC

Semiautomatic pneumatic filter shaker

STRUCTURE AND OPTIONS

60^{Hz}

60HZ
Available in 60Hz version



3 YEARS WARRANTY
Purchasing the replacement filter along with the vacuum



GX
Stainless steel bin and chamber AISI 304



100 LT
100 Lt bin



CYCLONIC EFFECT
Tangential inlet and cyclone installed
Tangential inlet + cyclone



SPARK TRAP
Built to capture sparks produced during welding, sanding, or polishing operations on metal parts

ACCESSORIES



P12377
ANTISTATIC KIT PRO Ø 50MM
Kit containing antistatic accessories for application with 50 mm diameter ATEX vacuum cleaner



P13642
ANTISTATIC KIT PRO Ø 40MM
Kit containing antistatic accessories for application with 40 mm diameter ATEX vacuum cleaner



P12378
ANTISTATIC STARTER KIT Ø 50MM
Basic kit containing antistatic accessories for application with 50 mm diameter ATEX vacuum cleaner



P13641
ANTISTATIC STARTER KIT Ø 40MM
Basic kit containing antistatic accessories for application with 40 mm diameter ATEX vacuum cleaner