

ATEX AND ACD VACUUM CLEANERS

ECOBULL PLUS 3D Z22

ATEX INDUSTRIAL VACUUM FOR INTENSIVE USE



POWER
4 kW - 5,5 HP



APPLICATION
Powders, solids and shavings

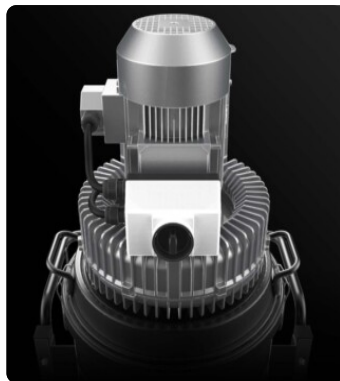


CAPACITY
65Lt

FEATURES

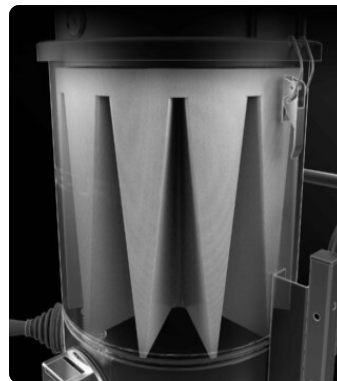
- Suitable and safe for intensive work in Atex zones 2 or 22
- Compact, sturdy and easy to handle
- Atex-certified blower
- High-efficiency antistatic filtration with built-in semi-automatic cleaning system

HIGHLIGHTS



SUCTION UNIT

The suction unit is a manufacturer-certified Atex side channel blower with direct coupling between motor and impeller. The Side Channel Blower is equipped with a safety valve that ensures continuous work, without any maintenance.



FILTER UNIT

Filtration is provided by a polyester star filter in class M (filtration efficiency 1 micron) with a high filtering surface area, which guarantees the passage of air even with a dirty filter.



FILTER CLEANING SYSTEM

An ergonomic manual filter shaker allows the filter to be cleaned easily and quickly, removing dust and debris from the surface of the filter.



COLLECTION UNIT

The material is collected inside an AISI 304 stainless steel container, complete with a metal handle that allows its release, to avoid any sparks that could be generated by the electrostatic charge.

TECHNICAL DATA

MOTOR

Typologies	Atex side channel blower
Power	4 kW - 5,5 HP
Frequency	50/60 Hz
Voltage	400 V
Vacuum in continuous run	270 mBar
Maximum air flow	350 m3/h
Insulation class	55 F IP
Noise level	72 dB(A)

MACHINE

Atex marking	II 3D Ex htc IIIB T140°C Dc
EX category	3D
Operating temperature	-10/+40 C°
Suction inlet	70 Ø mm
Collection system	AISI304 stainless steel container
Capacity	65 Lt
Dimensions	660 x 800 mm
Height	1630 mm
Weight	120 Kg
Safety valve	Pressure relief valve

FILTRATION

Primary filter type	Star
Filter surface	24000 cm2
EN 60335-2-69 filtration class	M
Media	Antistatic polyester
Filter Cleaning System	Manual

FEATURES



ATEX CERTIFICATION



DEFLECTOR

Internal deflector to protect the filter



PUSH HANDLE



POWER SUPPLY CABLE



4-PIN ATEX INDUSTRIAL PLUG



ANTISTATIC FILTRATION

Antistatic filtration to discharge static energy



VACUUM GAUGE

Vacuum gauge for indication of filter clogged or in need of replacement



WHEEL WITH BRAKE

Non-marking wheel with integrated brake



WHEELS

Non-marking pivoting wheels



STEEL CONSTRUCTION

Rugged industrial coated steel construction



PRV

Pressure relief valve installed



GRD

Grounding



BX

Stainless steel bin AISI 304

OPTIONS

AVAILABLE FILTER CLEANING SYSTEMS

**SP**

Automatic reverse jet cleaning system
Antistatic M class filter (EN 60335-2-69), 3
Polyester filter cartridges, 9 m² filter surface

AVAILABLE FILTER MEDIA

**HEPA 14**

Absolute filter (EN 1822)
22.000 cm² filter surface
H14 Class Filter (EN 1822)
Glass fiber

**PTFE ANT**

Antistatic PTFE filter (M class EN
60335-2-69)

STRUCTURE AND OPTIONS

60^{Hz}

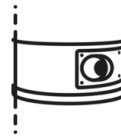
60HZ

Available in 60Hz version



3 YEARS WARRANTY

Purchasing the replacement filter along with the vacuum



CYCLONIC EFFECT

Tangential inlet and cyclone installed
Tangential inlet + cyclone



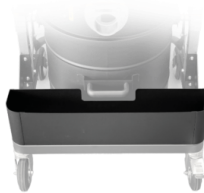
GX

Stainless steel bin and chamber AISI 304



TX

Stainless steel bin, chamber and frame AISI 304



AB

Accessories basket



100 LT

100 Lt bin

ACCESSORIES



P12377

ANTISTATIC KIT PRO Ø 50MM

Kit containing antistatic accessories for application with 50 mm diameter ATEX vacuum cleaner



P13642

ANTISTATIC KIT PRO Ø 40MM

Kit containing antistatic accessories for application with 40 mm diameter ATEX vacuum cleaner



P12378

ANTISTATIC STARTER KIT Ø 50MM

Basic kit containing antistatic accessories for application with 50 mm diameter ATEX vacuum cleaner



P13641

ANTISTATIC STARTER KIT Ø 40MM

Basic kit containing antistatic accessories for application with 40 mm diameter ATEX vacuum cleaner