

ATEX AND ACD VACUUM CLEANERS

PUMA 30 P 1/3D

ATEX EXPLOSION-PROOF INDUSTRIAL VACUUM CLEANER



POTENZA
22 kW - 30 HP

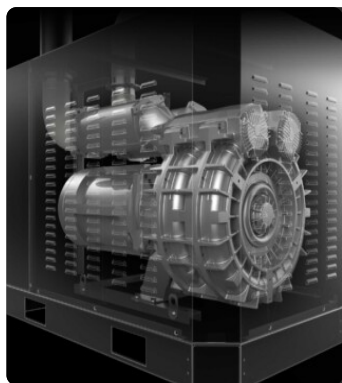


APPLICAZIONE
Combustible dusts

VANTAGGI

- Suitable and safe for intensive work in Atex 22 zones
- High efficiency antistatic filtration with integrated automatic cleaning system and grounding
- Maximum power thanks to the Atex certified turbine
- Ideal for large centralized suction systems

HIGHLIGHTS



SUCTION UNIT

The suction unit is a manufacturer-certified Atex side channel blower with direct coupling between motor and impeller. The Side Channel Blower is equipped with a safety valve that ensures continuous work, without any maintenance.



FILTER UNIT

Filtration is ensured by polyester cartridge filters in class M (filtration efficiency 1 micron) with high filtering surface area, which guarantees the passage of air even with dirty filter.



SP FILTER CLEANING SYSTEM

Automatic filter cleaning system in reverse flow of air at 6 bar (compressed air not supplied as standard). Each filter is cleaned at regular, alternately adjustable intervals without interrupting suction. Ideal for fine and difficult dust.



COLLECTION UNIT

The material is collected inside an AISI 304 stainless steel container, complete with a metal handle that allows its release, to avoid any sparks that could be generated by the electrostatic charge.

TECHNICAL DATA

MOTORE

Tipologie	Atex side channel blower
Potenza	22 kW - 30 HP
Frequenza	50/60 Hz
Voltaggio	400 V
Vuoto in continuo	200 mBar
Massima portata d'aria	1985 m3/h
Classe di isolamento	65 F IP
Livello di rumorosità	78 dB(A)

MACCHINA

Marcatura ATEX	II 1/3D Ex htc IIIC T140°C Da/Dc
Categoria EX	1/3D
Temperatura di utilizzo	-10/+40 C°
Bocca aspirante	130 Ø mm
Dimensioni	1050 x 1950 mm
Altezza	2300 mm
Peso	560 Kg
Valvola di sicurezza	Pressure relief valve

FILTRAZIONE

Tipologia filtro primario	4x Cartridges
Superficie filtrante	180000 cm2
Classe filtrazione EN 60335-2-69	M
Media	Antistatic polyester
Sistema Pulizia filtro	Automatic SP

DOTAZIONI



THIRD PARTY ATEX CERTIFICATION



ANTISTATIC FILTRATION
Antistatic filtration to discharge static energy



POWER SUPPLY CABLE



WHEEL WITH BRAKE
Non-marking wheel with integrated brake



WHEELS
Non-marking pivoting wheels



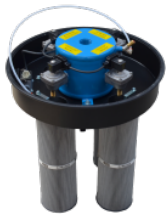
STEEL CONSTRUCTION
Rugged industrial coated steel construction



BX
Stainless steel bin AISI 304



5-PIN ATEX INDUSTRIAL PLUG



SP
Automatic reverse jet cleaning system



CYCLONIC EFFECT
Tangential inlet and cyclone installed



GRD
Grounding



FKL
Forklift bracket

OPTIONS

AVAILABLE FILTER MEDIA



HEPA 14

Absolute filter (EN 1822)
110.000 cm² filter surface
H14 Class Filter (EN 1822)
Glass fiber

STRUCTURE AND OPTIONS

60^{Hz}

60HZ

Available in 60Hz version



3 YEARS WARRANTY

Purchasing the replacement filter along with the vacuum



FLAMELESS VENT

A valve that contains the flame and the overpressure generated by a possible explosion.



PANEL VENT FOR DIRECTIONAL EXPLOSION

An explosion vent designed to break at a specific pressure and release the explosive pressure in a safe area.
Panel vent for explosion



GX

Stainless steel bin and chamber AISI 304



RC

Remote control 24V ON/OFF



CONTAINER EMPTYING KIT

System for easy container emptying using forklift lifting.

ACCESSORIES



P09319

TILTABLE SEPARATOR WITH CYCLONE HEAD (580 LT)

Separator in sturdy painted steel, can be lifted and tilted with the forklift. Fitted with a cyclone capable of breaking down the vacuumed m ...