

ATEX AND ACD VACUUM CLEANERS

PUMA FIX 25 3D

FIXED INDUSTRIAL ATEX VACUUM CLEANER FOR SUCTION SYSTEMS



POTENZA
18,5 kW - 25 HP



APPLICAZIONE
Powders, solids and
shavings

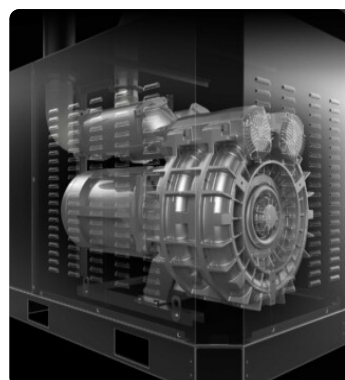


CAPACITA'
175Lt

VANTAGGI

- Powerful Atex-certified side-channel blowers suitable for continuous operation
- Easy to move with a forklift truck
- Ideal for installation in centralized systems
- Integrated cyclonic system to extend the useful life of the vacuum cleaner

HIGHLIGHTS



SUCTION UNIT

The suction unit is a manufacturer-certified Atex side channel blower with direct coupling between motor and impeller. The Side Channel Blower is equipped with a safety valve that ensures continuous work, without any maintenance.



FILTER UNIT

The tangential inlet facilitates the deposition of the sucked material in the container due to the cyclonic effect. Filtration is ensured by a polyester cartridge filter in class M (filtration efficiency 1 micron) with a high filtering surface area, which guarantees the passage of air even with a dirty filter.



SP FILTER CLEANING SYSTEM

Automatic filter cleaning system in reverse flow of air at 6 bar (compressed air not supplied as standard). Each filter is cleaned at regular, alternately adjustable intervals without interrupting suction. Ideal for fine and difficult dust.



COLLECTION UNIT

The material is collected inside an AISI 304 stainless steel container, complete with a metal handle that allows its release, to avoid any sparks that could be generated by the electrostatic charge.

TECHNICAL DATA

MOTORE

Tipologie	Atex side channel blower
Potenza	18,5 kW - 25 HP
Frequenza	50/60 Hz
Voltaggio	400 V
Vuoto in continuo	320 mBar
Massima portata d'aria	1380 m3/h
Classe di isolamento	55 F IP
Livello di rumorosità	74 dB(A)
Controllo Remoto	Free connector available
Quadro elettrico	Included

MACCHINA

Marcatura ATEX	II 3D Ex htc IIIB T140°C Dc
Categoria EX	3D
Temperatura di utilizzo	-10/+40 C°
Bocca aspirante	100 Ø mm
Sistema di raccolta	Steel container
Capacità	175 Lt
Dimensioni	840 x 1700 mm
Altezza	1970 mm
Valvola di sicurezza	Pressure relief valve
Supporto sollevamento muletto	Included

FILTRAZIONE

Tipologia filtro primario	4x Cartridges
Superficie filtrante	120000 cm2
Classe filtrazione EN 60335-2-69	M
Media	Antistatic polyester
Sistema Pulizia filtro	Automatic SP

DOTAZIONI



ELECTRICAL PANEL

Electrical panel, implementable with additional functions



ATEX CERTIFICATION



ANTISTATIC FILTRATION

Antistatic filtration to discharge static energy



4-PIN ATEX INDUSTRIAL PLUG



VACUUM GAUGE

Vacuum gauge for indication of filter clogged or in need of replacement



POWER SUPPLY CABLE



STEEL CONSTRUCTION

Rugged industrial coated steel construction



CYCLONIC EFFECT

Tangential inlet and cyclone installed



PRV

Pressure relief valve installed



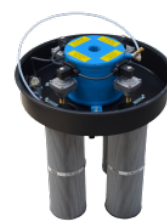
GRD

Grounding



BX

Stainless steel bin AISI 304



SP

Automatic reverse jet cleaning system

OPTIONS

AVAILABLE FILTER MEDIA



HEPA 14

Absolute filter (EN 1822)
110.000 cm² filter surface
H14 Class Filter (EN 1822)
Glass fiber

STRUCTURE AND OPTIONS

60^{Hz}

60HZ

Available in 60Hz version



3 YEARS WARRANTY

Purchasing the replacement filter along with the vacuum



FLAMELESS VENT

A valve that contains the flame and the overpressure generated by a possible explosion.



PANEL VENT FOR DIRECTIONAL EXPLOSION

An explosion vent designed to break at a specific pressure and release the explosive pressure in a safe area.
Panel vent for explosion



GX

Stainless steel bin and chamber AISI 304