

ATEX AND ACD VACUUM CLEANERS

# PUMA FIX 10 3D

## FIXED INDUSTRIAL ATEX VACUUM CLEANER FOR SUCTION SYSTEMS



**POTENZA**  
7,5 kW - 10 HP



**APPLICAZIONE**  
Powders, solids and  
shavings

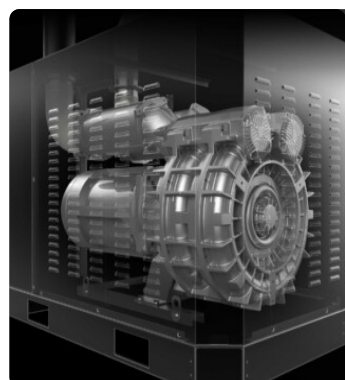


**CAPACITA'**  
175Lt

## VANTAGGI

- Powerful Atex-certified side-channel blowers suitable for continuous operation
- Easy to move with a forklift truck
- Ideal for installation in centralized systems
- Integrated cyclonic system to extend the useful life of the vacuum cleaner

## HIGHLIGHTS



### SUCTION UNIT

The suction unit is a manufacturer-certified Atex side channel blower with direct coupling between motor and impeller. The Side Channel Blower is equipped with a safety valve that ensures continuous work, without any maintenance.



### FILTER UNIT

The tangential inlet facilitates the deposition of the sucked material in the container due to the cyclonic effect. Filtration is ensured by a polyester cartridge filter in class M (filtration efficiency 1 micron) with a high filtering surface area, which guarantees the passage of air even with a dirty filter.



### SP FILTER CLEANING SYSTEM

Automatic filter cleaning system in reverse flow of air at 6 bar (compressed air not supplied as standard). Each filter is cleaned at regular, alternately adjustable intervals without interrupting suction. Ideal for fine and difficult dust.



### COLLECTION UNIT

The material is collected inside an AISI 304 stainless steel container, complete with a metal handle that allows its release, to avoid any sparks that could be generated by the electrostatic charge.

## TECHNICAL DATA

### MOTORE

Tipologie	Atex side channel blower
Potenza	7,5 kW - 10 HP
Frequenza	50/60 Hz
Voltaggio	400 V
Vuoto in continuo	260 mBar
Massima portata d'aria	730 m3/h
Classe di isolamento	55   F IP
Livello di rumorosità	74 dB(A)
Controllo Remoto	Free connector available
Quadro elettrico	Included

### MACCHINA

Marcatura ATEX	II 3D Ex htc IIIB T140°C Dc
Categoria EX	3D
Temperatura di utilizzo	-10/+40 C°
Bocca aspirante	100 Ø mm
Sistema di raccolta	AISI304 stainless steel container
Capacità	175 Lt
Dimensioni	840 x 1700 mm
Altezza	1970 mm
Valvola di sicurezza	Pressure relief valve
Supporto sollevamento muletto	Included

### FILTRAZIONE

Tipologia filtro primario	4x Cartridges
Superficie filtrante	120000 cm2
Classe filtrazione EN 60335-2-69	M
Media	Antistatic polyester
Sistema Pulizia filtro	Automatic SP

## DOTAZIONI



### ELECTRICAL PANEL

Electrical panel, implementable with additional functions



### ATEX CERTIFICATION



### ANTISTATIC FILTRATION

Antistatic filtration to discharge static energy



### 4-PIN ATEX INDUSTRIAL PLUG



### VACUUM GAUGE

Vacuum gauge for indication of filter clogged or in need of replacement



### POWER SUPPLY CABLE



### STEEL CONSTRUCTION

Rugged industrial coated steel construction



### CYCLONIC EFFECT

Tangential inlet and cyclone installed



### PRV

Pressure relief valve installed



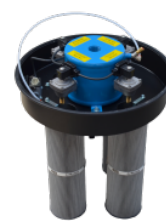
### GRD

Grounding



### BX

Stainless steel bin AISI 304



### SP

Automatic reverse jet cleaning system

## OPTIONS

### AVAILABLE FILTER MEDIA



#### HEPA 14

Absolute filter (EN 1822)  
110.000 cm<sup>2</sup> filter surface  
H14 Class Filter (EN 1822)  
Glass fiber

### STRUCTURE AND OPTIONS

**60<sup>Hz</sup>**

#### 60HZ

Available in 60Hz version



#### 3 YEARS WARRANTY

Purchasing the replacement filter along with the vacuum



#### FLAMELESS VENT

A valve that contains the flame and the overpressure generated by a possible explosion.



#### PANEL VENT FOR DIRECTIONAL EXPLOSION

An explosion vent designed to break at a specific pressure and release the explosive pressure in a safe area.  
Panel vent for explosion



#### GX

Stainless steel bin and chamber AISI 304