

DUST COLLECTORS

AF 55

INDUSTRIAL DUST COLLECTOR WITH VERY HIGH AIR FLOW RATE



POTENZA
5,5 kW - 7,5 HP



APPLICAZIONE
Volatile and suspended
powders

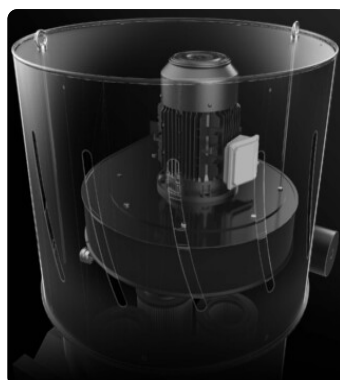


TIPO DI RACCOLTA
Localized discharge

VANTAGGI

- Fan with very high air flow rate
- Easy access for maintenance
- Very high filtration capacity with integrated automatic cleaning system
- Multiple construction and material discharge options available

HIGHLIGHTS



SUCTION UNIT

Suction is generated by an electric fan specially designed to ensure the best air flow rate while maintaining a good vacuum level.



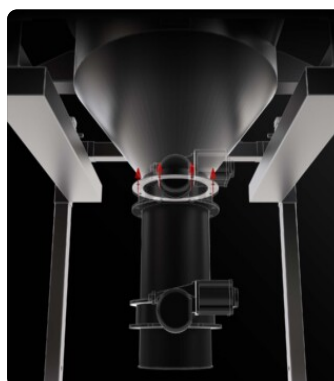
FILTER UNIT

High-efficiency Class M cartridges ensure maximum dust filtration. A practical hatch facilitates maintenance and replacement operations and avoids the need to remove the cover above, making maintenance operations easier.



SP FILTER CLEANING SYSTEM

Automatic filter cleaning system in reverse flow of air at 6 bar (compressed air not supplied as standard). Each filter is cleaned at regular, alternately adjustable intervals without interrupting suction. Ideal for fine and difficult dust.



CUSTOM EXHAUST SYSTEM

A specific discharge system, intermittent or continuous, can be installed depending on operational needs.

TECHNICAL DATA

MOTORE

| | |
|-----------------------------|-----------------|
| Tipologie | Electric Fan |
| Potenza | 5,5 kW - 7,5 HP |
| Frequenza | 50/60 Hz |
| Voltaggio | 400 V |
| Vuoto in continuo | 517 mBar |
| Livello depressione statica | 480 mmH2O |
| Massima portata d'aria | 2700 m3/h |
| Livello di rumorosità | 75 dB(A) |
| Quadro elettrico | Included |

MACCHINA

| | |
|-------------------------------|--------------------|
| Bocca aspirante | 200 Ø mm |
| Sistema di raccolta | Conveyed discharge |
| Dimensioni | 1402 x 1130 mm |
| Altezza | 4279 mm |
| Altezza compatto | 2580 mm |
| Peso | 432 Kg |
| Supporto sollevamento muletto | Included |

FILTRAZIONE

| | |
|----------------------------------|----------------------|
| Tipologia filtro primario | 4x Cartridges |
| Superficie filtrante | 340000 cm2 |
| Classe filtrazione EN 60335-2-69 | M |
| Media | Antistatic polyester |
| Sistema Pulizia filtro | Automatic SP |

DOTAZIONI



ELECTRICAL PANEL

Electrical panel, implementable with additional functions



PLUG

4-pole industrial plug



ANTISTATIC FILTRATION

Antistatic filtration to discharge static energy



VACUUM GAUGE

Vacuum gauge for indication of filter clogged or in need of replacement



POWER SUPPLY CABLE



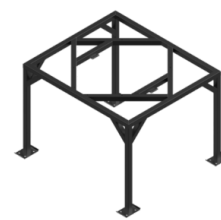
STEEL CONSTRUCTION

Rugged industrial coated steel construction



CYCLONIC EFFECT

Tangential inlet and cyclone installed



STR

Four legs to discharge in big bag



SP

Automatic reverse jet cleaning system

OPTIONS

STRUCTURE AND OPTIONS

60^{Hz}

60HZ
Available in 60Hz version



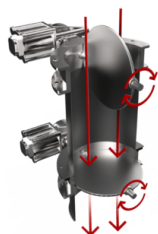
3 YEARS WARRANTY
Purchasing the replacement filter along with the vacuum



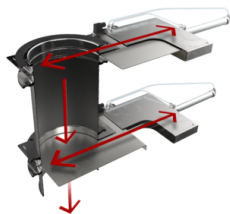
DISCHARGE WITH COUNTERBALANCED FLAP
The material is automatically discharged every time suction is stopped.



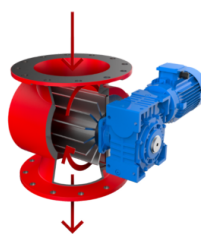
DISCHARGE WITH BUTTERFLY VALVE
Manual intermittent discharging system with butterfly valve
Manual discharging butterfly valve



DOUBLE PNEUMATIC DISCHARGE WITH BUTTERFLY VALVES
System with valves that open alternately to allow the material to be discharged and the vacuum to be maintained at the same time.
Double electro pneumatic discharging butterfly valve ATEX



DOUBLE DISCHARGE WITH ELECTRO-PNEUMATIC DAMPERS
System with dampers that open alternately to allow the material to be discharged and the vacuum to be maintained at the same time.



ROTARY VALVE FOR CONTINUOUS DISCHARGE
The valve rotates continuously allowing a constant and uniform discharge of the aspirated material.
Rotary valve for continuous hopper discharge



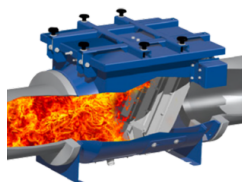
ROTARY LEVEL SENSOR
Sensor with rotating paddle that sends a signal when the container is full to immediately stop suction



PANEL VENT FOR DIRECTIONAL EXPLOSION
An explosion vent designed to break at a specific pressure and release the explosive pressure in a safe area.
Panel vent for explosion



FLAMELESS VENT
A valve that contains the flame and the overpressure generated by a possible explosion.



NON-RETURN VALVE
Isolates explosion and prevents it from spreading from the industrial vacuum to the pipe